



mævn

2022 CATALOG



TOP
5061 Nvy
5002 Nvy
5001 QGR

BOTTOM
5092 Nvy
5091 QGR



OUR MISSION

From superior design to world-class development, we provide the highest standards to all our customers. We strive to be your number one supplier of medical uniforms.

We are committed to delivering a **wide variety of collections** that are **engineered superbly with exceptional quality**. Our unquestionable reliability and outstanding customer service are recognized for providing **100% satisfaction guarantee** while maintaining competitive pricing.



TOP
1767 ANTQ

BOTTOM
7901 NVY



TOP
4511 OLV
4510 HPK

BOTTOM
8510 OLV
8520 HPK

NB011
CAMO
NVY

COLLECTIONS

- NEW STYLES**
 - 4 Momentum
 - 10 Matrix Pro
- TOP SELLER**
 - 14 Matrix Impulse
 - 18 Matrix
 - 24 EON Sport
 - 26 EON
 - 45 Bestee | Knits
 - 54 Prints
 - 56 ReadyGO
 - 32 Pure Soft
 - 34 Blossom
 - 36 Red Panda
 - 42 Core
 - 46 Blaze
 - 53 Smart
 - 48 Lab Coats

CONTENTS

INFORMATION

- 56 Accessories
- 61 Group Sales
- 65 Color Code
- 66 Color Guide
- 74 Sizing Guide
- 75 Placing an Order
- 75 Customer Service

momentum

Built for high performance with **100% Polyester Mechanical Stretch fabric**, the Momentum collection perfectly tailors a soft-draped style.

Its **durable, breathable** and incredibly **wrinkle-resistant moisture-wicking** material makes this modern athletic style the perfect fit.



TOP
5001 HPK
5861 PEW
5801 PEW
5061 GBL
5002 GBL

BOTTOM
5091 HPK
5891 PEW
5092 GBL

100% Polyester

Mechanical Stretch

Super soft, breathable fabric • Moisture-wicking • Anti-wrinkle

MOMENTUM

5001

WOMEN'S DOUBLE V-NECK TOP



Women's double V-neck top. Functional dyed-to-match utility loop at shoulder seam. Two front patch pockets and one small welt pocket. Front princess seams and back darts for added style and comfort. Side vents.

Reg: **XXS - XL** (M): 27.25"

CBL	RYL	GBL	NVY	CRB	HTR	OLV
RED	HPK	QGR	GRP	WIN	PEW	BLK

Plus: **2XL - 3XL** (M): 27.25"

RED	HPK	QGR	GRP
-----	-----	-----	-----

Plus: **2XL - 5XL** (M): 27.25"

CBL	RYL	GBL	NVY	CRB
HTR	OLV	WIN	PEW	BLK



5091

WOMEN'S 6-POCKET PANT



Tapered pant with full elastic waistband. Contrast color outer drawstring. Two front slant patch pockets. Two cargo pockets and two back patch pockets. Side vents.

Reg: **XXS - XL** (Inseam): 30.5"

CBL	GBL	NVY	CRB	HTR
OLV	PEW	BLK	RYL	WIN

Plus: **2XL - 3XL** (Inseam): 30.5"

RED	HPK	QGR	GRP
-----	-----	-----	-----

Plus: **2XL - 5XL** (Inseam): 30.5"

CBL	GBL	NVY	CRB	HTR
OLV	PEW	BLK	RYL	WIN

Petite: **XS - 3XL** (Inseam): 28"

CBL	RYL	GBL	NVY	CRB	HTR	OLV
RED	HPK	QGR	GRP	WIN	PEW	BLK

Tall: **XS - 2XL** (Inseam): 33"

CBL	RYL	GBL	NVY	CRB	HTR	OLV
RED	HPK	QGR	GRP	WIN	PEW	BLK

MOMENTUM

100% Polyester

Mechanical Stretch

Super soft, breathable fabric • Moisture-wicking • Anti-wrinkle



5002

WOMEN'S MOCK-WRAP NECK TOP



Mock-wrap top with decorative logo tape at the inner back neckline. Functional dyed-to-match utility loop at shoulder seam. Two front slant pockets and one extra pocket at princess seams. Front and back princess seams for added style and comfort. Dyed-to-match micro knit side panels. Side vents.

Reg: **XXS - XL** (M): 27.25"

CBL	GBL	NAVY	CRB	HTR	RED	HPK
OLV	PEW	BLK	RYL	WIN	QGR	GRP

Plus: **2XL - 3XL** (M): 27.25"

RED	HPK	QGR	GRP
-----	-----	-----	-----

Plus: **2XL - 5XL** (M): 27.25"

CBL	GBL	NAVY	CRB	HTR
OLV	PEW	BLK	RYL	WIN

5092

WOMEN'S PULL-ON JOGGER PANT



Jogger pant with dyed-to-match micro knit fabric at waistband and leg cuff. Decorative logo inner drawstring. Two cargo patch pockets. Two back patch pockets.

Reg: **XXS - 3XL** (Inseam): 28.5"

CBL	RYL	GBL	NAVY	CRB	HTR	OLV
RED	HPK	QGR	GRP	WIN	PEW	BLK

Petite: **XS - 3XL** (Inseam): 28.5"

CBL	RYL	GBL	NAVY	CRB	HTR	OLV
RED	HPK	QGR	GRP	WIN	PEW	BLK

Tall: **XS - 2XL** (Inseam): 31"

CBL	RYL	GBL	NAVY	CRB	HTR	OLV
RED	HPK	QGR	GRP	WIN	PEW	BLK

100% Polyester

Mechanical Stretch

Super soft, breathable fabric • Moisture-wicking • Anti-wrinkle

MOMENTUM

5801

MEN'S CHEST POCKET V-NECK TOP



Men's V-neck top. Decorative logo tape at the inner back neckline. Functional dyed-to-match utility loop at shoulder seam. One chest pocket with a pen slot. Side vents.

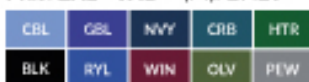
Reg: XS - XL (M): 29.25"



Plus: 2XL - 3XL (M): 29.25"

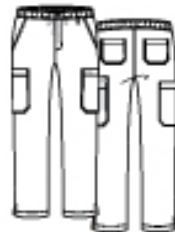


Plus: 2XL - 5XL (M): 29.25"



5891

MEN'S FLY FRONT CARGO PANT



Tapered pant with full elastic waistband. Functional dyed-to-match utility loop below the waistband. Functioning front zipper and button. Inner drawstring. Two front slant pockets. Two patch cargo pockets with one small utility pocket. Two back patch pockets. Side vents.

Reg: XS - XL (Inseam): 31"



Plus: 2XL - 3XL (Inseam): 31"



Plus: 2XL - 5XL (Inseam): 31"



Short: XS - 3XL (Inseam): 28.5"



Tall: SM - 2XL (Inseam): 33.5"





5802

MEN'S 3-POCKET V-NECK TOP



Men's V-neck top with decorative logo tape at the inner back neckline. Functional dyed-to-match utility loop at the shoulder. One chest pocket with a pen slot. Two front patch pockets with inner utility pocket. Dyed-to-match micro knit side panels. Side vents.

Reg: XS - XL (M): 29.25"

CBL	GBL	NAVY	CRB	HTR	RED	QGR
OLV	PEW	BLK	RYL	WIN	GRP	

Plus: 2XL - 3XL (M): 29.25"

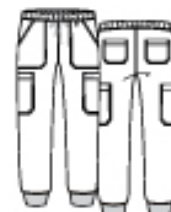
RED	QGR	GRP
-----	-----	-----

Plus: 2XL - 5XL (M): 29.25"

CBL	GBL	NAVY	CRB	HTR
OLV	PEW	BLK	RYL	WIN

5892

MEN'S FULL ELASTIC JOGGER PANT



Men's jogger pant with functional dyed-to-match utility loop below the waistband. Decorative logo inner drawstring. Dyed-to-match micro knit fabric at leg cuff. Two front slant patch pockets. Two cargo patch pockets. Two back patch pockets.

Reg: XS - XL (Inseam): 29"

Short: XS - 3XL (Inseam): 26.5"

Plus: 2XL - 3XL (Inseam): 29"

Tall: 5M - 2XL (Inseam): 31.5"

CBL	RYL	GBL	NAVY	CRB	HTR	OLV
RED	QGR	PEW	BLK	GRP	WIN	

100% Polyester

Mechanical Stretch

Super soft, breathable fabric • Moisture-wicking • Anti-wrinkle

MOMENTUM

5061

WOMEN'S FRONT ZIP WARM-UP JACKET



Women's front zip warm-up jacket. Dyed-to-match front zipper tape with silver teeth. Decorative logo tape at the inner back neckline. Functional dyed-to-match utility loop at the shoulder. Two front slash pockets at princess seam. Dyed-to-match rib cuff at neckline, sleeve and hem.

Reg: XS - XL (M): 27.75"
Plus: 2XL - 5XL (M): 27.75"



5861

MEN'S FRONT ZIP WARM-UP JACKET



Men's front zip warm-up jacket. Dyed-to-match front zipper tape with silver teeth. Decorative logo tape at the inner back neckline. Functional dyed-to-match utility loop at the shoulder. Two front slash pockets at princess seams. Dyed-to-match rib cuff at neckband and sleeve hem. Patch pocket at the sleeve with zipper opening.

Reg: XS - XL (M): 28.5"
Plus: 2XL - 5XL (M): 28.5"



PRO MATRIX



TOP
5901 WIN
3901 HNV
3901 HGR
5901 PEW

BOTTOM
8901 WIN
6901 HNV
6901 HGR
8901 PEW

Blending fashion with function, while maintaining a soft, professional structure and aesthetic.

74% Polyester / 20% Rayon / 6% Spandex

High Performance

Soft heather fabric • Durable stretch • Professional style and fit

MATRIX PRO

NEW STYLE

3902

WOMEN'S ACTIVE
KNIT V-NECK TOP



Women's curved V-neck top. Two front welt pockets with decorative contrast piping. Dyed-to-match micro knit panel at side seam. Dyed-to-match functional utility loop at the shoulder. Side vents.

Reg: XXS - XL (M): 27.25"

Plus: 2XL - 3XL (M): 27.25"



NEW STYLE

6902

WOMEN'S FULL
WAIST JOGGER PANT



Three quarter elastic waistband jogger pant. Dyed-to-match drawstring. Two front slant pockets. Two welt cargo pocket with decorative contrast piping. Two back welt pockets with decorative contrast piping. Stripe metallic gold shimmer on the rib waistband and leg cuff.

Reg: XXS - XL (Inseam): 28.5" Petite: XS - 2XL (Inseam): 26"

Plus: 2XL - 3XL (Inseam): 28.5" Tall: XS - 2XL (Inseam): 31"





3901

WOMEN'S CONTRAST LAYERED V-NECK TOP



Women's heather fabric V-neck top with layered contrast neckband. Two front patch pockets with inner utility loop and a contrast welt pocket. Functional contrast utility loop at the shoulder seam. Decorative contrast piping. Front princess seams and back darts. Side vents.

Reg: **XXS - XL** (M): 27.25"
Plus: **2XL - 3XL** (M): 27.25"

HGR HNV

6901

WOMEN'S CONTRAST YOGA WAISTBAND PANT



Women's full contrast heather yoga style waistband pant with tapered leg. Contrast drawstring with grommets. Two front curved pockets. One contrast welt cargo pocket. Two back patch pockets with contrast piping. Front vertical seams. Side vents.

Reg: **XXS - XL** (Inseam): 31"
Plus: **2XL - 3XL** (Inseam): 31"
Petite: **XS - 2XL** (Inseam): 28.25"
Tall: **SM - XL** (Inseam): 33.5"

HGR HNV



7091

WOMEN'S COMFY WARM-UP JACKET



Women's long sleeve jacket with contrast inner knit rib collar. Contrast front reverse zipper. Two front slant patch pockets with contrast welt pocket. Front and back princess seams. Contrast knit rib band at the sleeve cuff. Contrast E-band at hem of side panel. Contrast functional utility loop at the shoulder seam.

Reg: **XS - XL** (M): 27.25"
Plus: **2XL - 3XL** (M): 27.25"

HGR HNV

74% Polyester / 20% Rayon / 6% Spandex

High Performance

Soft heather fabric • Durable stretch • Professional style and fit

MATRIX PRO

NEW STYLE

5902

MEN'S 3-POCKET
V-NECK TOP

Men's V-neck top. Dyed-to-match functional utility loop at the shoulder. One chest pocket with a pen slot. Two front patch pockets with decorative triple stitch. Back yoke for added style and shape. Side vents.

Reg: XS - XL (M): 30.25"

Plus: 2XL - 3XL (M): 30.25"



NEW STYLE

8902

MEN'S FULL
ELASTIC WAISTBAND
JOGGER PANT

Men's full elastic waistband jogger pant. Dyed-to-match inner drawstring. Two front slant pockets. Two welt cargo pockets. Two back patch pockets. Dyed-to-match solid rib at the leg cuff.

Reg: XS - XL (Inseam): 29"

Plus: 2XL - 3XL (Inseam): 29"

Petite: XS - 2XL (Inseam): 26.5"

Tall: XS - 2XL (Inseam): 31.5"



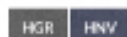
5901

MEN'S CONTRAST
PIPING V-NECK TOP

Men's V-neck top. One chest pocket with a pen slot. Dyed-to-match functional utility loop at the shoulder seam. Decorative contrast piping at front neckband and chest pocket. Decorative double stitches by using thick thread. Back yoke. Side vents.

Reg: XS - XL (M): 30.25"

Plus: 2XL - 3XL (M): 30.25"



NEW COLOR



8901

MEN'S HALF
ELASTIC WAISTBAND
CARGO PANT

Men's half elastic waistband pant with tapered leg. Dyed-to-match inner drawstring. Functional front fly with button. Two front and back angled patch pockets. One angled patch cargo pocket with additional scissor pocket. Decorative double stitches by using thick thread.

Reg: XS - XL (Inseam): 31"

Plus: 2XL - 3XL (Inseam): 31"

Short: XS - 2XL (Inseam): 28.5"



NEW COLOR



MATRIX IMPULSE

Feel confident and empowered with the softest, most comfortable stretch fabric. One of the most talked about collections.

TOP
4510 ORB

BOTTOM
8510 ORB

92% Polyester / 8% Spandec

High Comfort Stretch

Super soft fabric • Durable stretch • Professional style and fit

MATRIX IMPULSE

4510

WOMEN'S CONTRAST CURVED V-NECK TOP



Women's V-neck top with contrast neckline. Two front curved patch pockets at princess seam. One inner utility pocket. Front princess seams and back darts. Decorative contrast stitching. Side vents.

XXS - 5XL (M): 27.25"



Petite: XXS - 2XL (M): 27.25"



XS - 3XL (M): 27.25"



NEW COLORS



4511

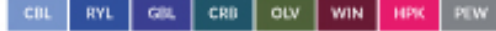
WOMEN'S CURVED V-NECK TOP



Women's V-neck top. Two front curved patch pockets at princess seam. One inner utility pocket. Front princess seams and back darts. Side vents.

Reg: XXS - XL (M): 27.25"

Plus: 2XL - 3XL (M): 27.25"



NEW COLORS



Petite: XXS - 2XL (M): 27.25"



8510

WOMEN'S FULL ELASTIC WAISTBAND PANT



Women's full elastic waistband pant with tapered leg. Dyed-to-match inner drawstring. Two front slant pockets. One cargo patch pocket. Two back patch pockets with contrast piping. Decorative front vertical seams and contrast stitching. Side vents.

Reg: XXS - XL (Inseam): 30.5"

Plus: 2XL - 3XL (Inseam): 30.5"

Petite: XS - 2XL (Inseam): 28"



Plus: 4XL - 5XL (Inseam): 30.5"



Petite: XXS - 2XL (Inseam): 28"



NEW COLORS



■ = CONTRAST COLOR



4520

WOMEN'S CONTRAST KNIT PANEL MOCK-WRAP TOP



Women's mock-wrap top. Contrast knit side panel. Two front patch pockets with inner utility tape. Back yoke and darts.

Reg: **XXS - XL** (M): 27.25"
Plus: **2XL - 3XL** (M): 27.25"



NEW COLORS



▲ = CONTRAST COLOR

4521

WOMEN'S KNIT PANEL MOCK-WRAP TOP



Women's mock-wrap top. Dyed-to-match knit side panel. Two front patch pockets with inner utility tape. Back yoke and darts.

Reg: **XXS - XL** (M): 27.25"
Plus: **2XL - 3XL** (M): 27.25"



NEW COLORS

8520

WOMEN'S KNIT YOGA WAISTBAND JOGGER PANT



Women's knitted yoga waistband pant. Jogger style leg with knit fabric. Self fabric contrast inner drawstring with grommets. Two front slant patch pockets. One slant cargo pocket. Two back patch pockets. Decorative contrast/dyed-to-match stitches.

Reg: **XXS - XL** (Inseam): 28.5"
Plus: **2XL - 3XL** (Inseam): 28.5"
Petite: **XXS - 2XL** (Inseam): 26"

Tall: **XS - 2XL** (Inseam): 31"



Reg: **XS - XL** (Inseam): 28.5"
Plus: **2XL - 3XL** (Inseam): 28.5"
Petite: **XS - 2XL** (Inseam): 28.5"

NEW COLORS



▲ = CONTRAST COLOR



92% Polyester / 8% Spandex

High Comfort Stretch

Super soft fabric • Durable stretch • Professional style and fit

MATRIX IMPULSE

4530

WOMEN'S V-NECK TUCK-IN TOP



Women's V-neck tuck-in top. One single welt chest pocket. Back shoulder panel and back darts for added style and shape. Side vents.

Reg: XXS - XL (M): 25.75"

Plus: 2XL - 3XL (M): 25.75"



7510

WOMEN'S ROUND NECK SNAP JACKET



Women's round neck long sleeve jacket. Dyed-to-match snap buttons at the front. Contrast piping at the inner backband. Two front patch pockets with a utility pocket and inner utility tape. Front princess seams and back darts for added style and shape. Dyed-to-match knit rib band at sleeve cuff.

Reg: XS - XL (M): 27.75"

Plus: 2XL - 3XL (M): 27.75"



MATRIX

All business meets extreme high comfort stretch fabric to create the ultimate versatile go-to collection in multiple styles.



TOP
3502 BLK
BOTTOM
6701 BLK

NEW STYLE

7711 BASIC FRONT ZIP-UP VEST



Women's curved V-neck front zip-up vest. Dyed-to-match front zip. Two front patch pockets with three extra small pockets. Front and back princess seams and back waistband for added style and shape. Dyed-to-match functional utility loop at the shoulder seam.

Reg: XS - XL (M): 27.75" Plus: 2XL - 3XL (M): 27.75"

CBL RYL NAVY WIN PEW BLK WHT



3501

WOMEN'S DOUBLE V-NECK TOP

Women's double V-neck top. Two front slant patch pockets with inner utility loop. One single welt pocket. Dyed-to-match functional bungee loop at the shoulder seam. Front and back vertical seams. Side slits.

Reg: XXS - XL (M): 27.25"
Plus: 2XL - 3XL (M): 27.25"

CBL	RYL	GBL	NVY	TEL
CRB	OLV	EGP	WIN	RED
HPK	PEW	BLK	WHT	



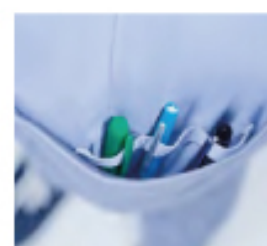
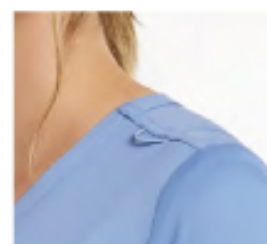
Petite: XS - XL (M): 25.25"

RYL	NVY	PEW	BLK
-----	-----	-----	-----

Reg: XS - XL (M): 27.25"
Plus: 2XL - 3XL (M): 27.25"

NEW COLORS

SUN	ORB
-----	-----



3502

WOMEN'S CONTRAST DOUBLE V-NECK TOP

Women's front and back V-neck top. Two front slant patch pockets with inner utility loop. One single welt pocket. Dyed-to-match functional utility loop at the shoulder seam. Front and back vertical seams. Side vents.

Reg: XXS - XL (M): 27.25" Plus: 2XL - 3XL (M): 27.25"

CBL	RYL	GBL	NVY	TEL	CRB	OLV	EGP	WIN
RED	HPK	PEW	BLK	WMN	DHA			

NEW COLORS

SUN	ORB
-----	-----

▲ = CONTRAST COLOR - HEATHER GREY



6501

WOMEN'S FULL ELASTIC WAISTBAND CARGO PANT

Women's tapered leg pant with full elastic waistband. Dyed-to-match grommets and drawstring. Two front curved patch pockets. One patch cargo pocket and two back patch pockets. Side vents.

Reg: XXS - XL (Inseam): 31"

Plus: 2XL - 3XL (Inseam): 31"

Petite: XS - 2XL (Inseam): 28.5"

CBL	RYL	GBL	NVY	TEL	CRB
HPK	PEW	BLK	WMN	WIN	RED
EGP	DHA	FSM	OLV	ARB	



Tall: SM - XL (Inseam): 33.5"

CBL	RYL	NVY	TEL
PEW	BLK	WIN	

Reg: XS - XL (Inseam): 31"
Plus: 2XL - 3XL (Inseam): 31"
Petite: XS - 2XL (Inseam): 28.5"

NEW COLORS

SUN	ORB
-----	-----



3701

WOMEN'S CURVED MOCK-WRAP TOP

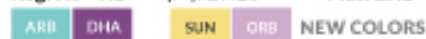


Women's curved mock-wrap top with heather piping at inner back neckband. Two front slant patch pockets. Inner utility loop and a utility pocket. Dyed-to-match side knit panels at the back. Dyed-to-match functional utility loop at the shoulder seam. Front and back princess seams. Side vents.

Reg: XXS - XL (M): 27.25" Plus: 2XL - 3XL (M): 27.25"



Reg: XS - XL (M): 27.25" Plus: 2XL - 3XL (M): 27.25"



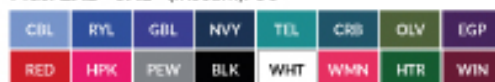
6701

WOMEN'S ELASTIC WAISTBAND SEMI-JOGGER PANT



Full heather elastic waistband pant. Dyed-to-match grommets and drawstring. Half jogger style leg with E-band at the back side. Two front curved pockets. One patch cargo pocket with a pen slot. Two back patch pockets.

Reg: XXS - XL (Inseam): 30" Petite: XS - 2XL (Inseam): 27.5"
Plus: 2XL - 3XL (Inseam): 30"



Tall: XS - XL (Inseam): 32.5"



Reg: XS - XL (Inseam): 30" Petite: XS - 2XL (Inseam): 27.5"
Plus: 2XL - 3XL (Inseam): 30"



7701

WOMEN'S LONG SLEEVE ROUND NECK SNAP JACKET



Long sleeve round neck snap button jacket. Contrast piping at back neckband. Two front slant patch pockets. Inner utility loop and welted utility pocket. Front princess seams and back darts. Dyed-to-match half E-band at the sleeve cuff. Dyed-to-match functional utility loop at the shoulder seam. Side vents.

Reg: XS - XL (M): 27.75" Plus: 2XL - 3XL (M): 27.75"



65% Polyester / 32% Rayon / 3% Spandex

High Comfort Stretch

Super soft fabric • Durable stretch • Professional style and fit

MATRIX

5501

MEN'S BASIC V-NECK TOP

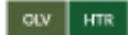


Men's V-neck top. One chest pocket with a pen slot. Dyed-to-match functional utility loop at the shoulder seam. Decorative double stitches by using thick thread. Front shoulder panel and back yoke for added style and shape. Side vents.

Reg: XS - XL (M): 29.25"
Plus: 2XL - 3XL (M): 29.25"

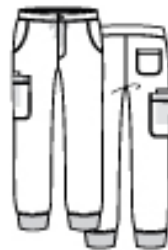


NEW COLORS



8501

MEN'S HALF ELASTIC WAISTBAND JOGGER PANT



Men's half elastic waistband pant with knitted jogger leg. Dyed-to-match inner drawstring. Functional front fly with button. Two front curved pockets. One cargo patch pocket with an inner utility pocket. One back single patch pocket. Decorative double stitches by using thick thread.

Reg: XS - XL (Inseam): 29"
Plus: 2XL - 3XL (Inseam): 29"
Short: XS - 2XL (Inseam): 26.5"



NEW COLORS





5502

MEN'S 3-POCKET V-NECK TOP

Men's V-neck top. One chest pocket with pen slot. Two front slant patch pockets. Dyed-to-match functional utility loop at the shoulder seam. Side vents.

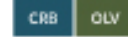


Reg: XS - XL (M): 29.75"

Plus: 2XL - 3XL (M): 29.75"



NEW COLORS



8502

MEN'S HALF ELASTIC WAISTBAND CARGO PANT

Men's half elastic waistband pant with tapered leg. Dyed-to-match inner drawstring. Functional front fly with button. Two front curved pockets. Two cargo patch pockets with an inner utility pocket. One back patch pocket. Decorative double stitches by using thick thread.



Reg: XS - XL (Inseam): 31"

Plus: 2XL - 3XL (Inseam): 31"

Short: XS - 2XL (Inseam): 28.5"



NEW COLORS



65% Polyester / 32% Rayon / 3% Spandex

High Comfort Stretch

Super soft fabric • Durable stretch • Professional style and fit

MATRIX

3500

UNISEX BASIC V-NECK TOP



Unisex V-neck top. One angled chest pocket with a pen slot. Dyed-to-match functional utility loop. Side vents.

Reg: XS - XL (M): 28.75"

Plus: 2XL - 5XL (M): 28.75"

CBL RYL NVY WIN FEW BLK



6500

UNISEX BASIC PANT



Unisex pant with slightly tapered leg. Dyed-to-match drawstring. One angled cargo patch pocket with a pen slot. One angled back patch pocket.

Reg: XS - XL (Inseam): 31"

Plus: 2XL - 5XL (Inseam): 31"

Short: XS - 2XL (Inseam): 28.5"

CBL RYL NVY WIN FEW BLK





EON SPORT

COOLMAX

LYCRA

UPF⁴⁰⁺

For the athlete in you,
maximize mobility with this
moisture-wicking
scrub wear
to keep you dry
all day long.

TOP
1778 IFB
1768 OLV

BOTTOM
7368 IFB
7378 OLV

1768

WOMEN'S SPORTY & COMFY MULTI-POCKET V-NECK TOP

Women's V-neck top. Four front pockets at both interior and exterior side. Back shoulder panel for added style and shape. Dyed-to-match center back knit panel. Side vents.



Reg: XS - 1XL (M): 27.25"
Plus: 2XL - 3XL (M): 27.25"

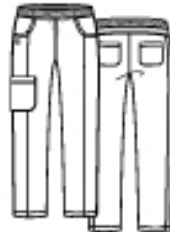
RYL Nvy IFB OLV CHR BLK



7368

WOMEN'S SPORTY & COMFY ELASTIC WAISTBAND PANT

Women's full elastic yoga style waistband pant. Inner dyed-to-match drawstring. Two front curved pockets. One cargo patch pocket and two back patch pockets. Dyed-to-match side knit panel and back yoke.



Reg: XS - 1XL (Inseam): 30.5"
Plus: 2XL - 3XL (Inseam): 30.5"
Petite: XS - 2XL (Inseam): 28"

RYL Nvy IFB OLV CHR BLK



1778

WOMEN'S SPORTY CHEST POCKET V-NECK TOP

Women's V-neck top with knit at front neckband. One chest welt pocket. Decorative front and back shoulder panel. Dyed-to-match side knit panel. Side vents.



Reg: XS - 1XL (M): 26.75"
Plus: 2XL - 3XL (M): 26.75"

RYL Nvy IFB OLV CHR BLK



COOLMAX

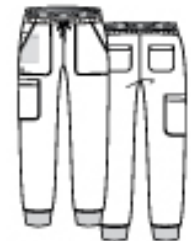
LYCRA

UPF 40+

7378

WOMEN'S SPORTY FULL ELASTIC LOGO WAISTBAND JOGGER PANT

Women's full elastic logo waistband jogger pant. Dyed-to-match drawstring. Two front patch pockets with a utility pocket. One cargo patch pocket and two back patch pockets. Dyed-to-match knit at leg hem.



Reg: XS - 1XL (Inseam): 28.5"
Plus: 2XL - 3XL (Inseam): 28.5"
Petite: XS - 2XL (Inseam): 26"

RYL Nvy IFB OLV CHR BLK



EON

COOLMAX

LYCRA

UPF⁴⁰⁺

A high performance collection that never slows down when you need to gear up for the grind. It offers the best support with lightweight, soft fabric and multiple pockets.



TOP
1708 GBL
5208 PEW
1738 WIN
5308 RYL
1738 TBL

BOTTOM
7308 GBL
8308 PEW
7318 WIN
8308 RYL
7348 TBL

COOLMAX[®]UPF⁴⁰⁺

1708

WOMEN'S V-NECK POCKET TOP



Women's V-neck top. Front princess seams and back darts.

One welt pocket at waist with triangle ring. Two front patch pockets with inner utility loop and utility pocket. Side vents.

Reg: XXS - XL (M): 27.75"
Plus: 2XL - 3XL (M): 27.75"

CBL	RYL	GBL	TNY	MBLE	TBL	CRB	SKY	HTR	BLK
LVR	GRP	EGP	WIN	RED	SBP	KHI	PEW	CHR	WHT



7308

WOMEN'S FULL ELASTIC ZIPPER POCKET CARGO PANT



Women's full elastic waistband straight leg pant. Dyed-to-match drawstring and a triangle ring on belt loop. Two front slant patch pockets with inner utility pocket and zipper pocket. One welt cargo pocket. Two back welt pockets. Side vents.

Reg: XXS - XL (Inseam): 30.5"
Plus: 2XL - 3XL (Inseam): 30.5"
Petite: XXS - 3XL (Inseam): 28"

CBL	RYL	GBL	TNY	MBLE	TBL	CRB	SKY	HTR	BLK
LVR	GRP	EGP	WIN	RED	SBP	KHI	PEW	CHR	WHT

Tall: XS - 3XL (Inseam): 33"

CBL	RYL	GBL	TNY	TBL	CRB	SKY	HTR	BLK
LVR	EGP	WIN	RED	SBP	KHI	PEW	CHR	WHT

Tall: XS - 2XL (Inseam): 33"

GRP	MBLE
-----	------



EON

59% Polyester / 22% Rayon / 19% Elastereil-P Mesh: 83% Polyester 17% Spandex

High Performance

Breathable fabric • Moisture-wicking fibers • Temperature control • Shape retention

COOLMAX

LYCRA

UPF⁴⁰⁺



1718

WOMEN'S SPORTY MESH PANEL TOP



Women's curved V-neck top. Mesh side panels. Two curved front pockets. One side pocket with zipper and one side pocket with twill tape. Curved back yoke mesh panel with piping inside.

Reg: **XXS - XL** (M): 27.75"

Plus: **2XL - 3XL** (M): 27.75"



7318

WOMEN'S SPORTY MESH PANEL PANT



Women's full elastic waistband straight leg pant. Dyed-to-match drawstring and grommets. Two slant pockets with a utility pocket. Two back pockets with zipper. Mesh piecing at side panels.

Reg: **XXS - XL** (Inseam): 30.5"

Plus: **2XL - 3XL** (Inseam): 30.5"

Petite: **XXS - 3XL** (Inseam): 28"

Tall: **XS - 3XL** (Inseam): 33"



COOLMAX[®]UPF⁴⁰⁺

1738

WOMEN'S BACK MESH PANEL SHAPED V-NECK TOP



Women's V-neck top. Two front patch pockets with a utility pocket and inner utility loop. Back yoke mesh panel. Front and back princess seams. Side vents.

Reg: XXS - XL (M): 27.75"

Plus: 2XL - 3XL (M): 27.75"

CBL	RYL	GBL	TNY	TBL	SKY	HTR	LVR
SBP	PEW	BLK	WHT	WIN	CRD	EGP	



1748

WOMEN'S BACK MESH PANEL MOCK-WRAP TOP



Women's V-neck top. Curved back yoke with mesh panel and detailing inside. Two front patch pockets. Utility tape in the left pocket. Single inner utility pocket. Empire waist with front and back darts. Side vents.

Reg: XXS - XL (M): 27.75"

Plus: 2XL - 3XL (M): 27.75"

CBL	RYL	GBL	TNY	TBL	SKY	HTR	LVR
SBP	PEW	BLK	WHT	WIN	CRD	EGP	



7338

WOMEN'S 7-POCKET YOGA PANT



Tapered pant with yoga style waistband. Two front slant pockets. Single inner utility pocket. Single mesh pocket with twill tape. Two back patch pockets. Single cargo pocket.

Reg: XXS - XL (Inseam): 30.5"

Plus: 2XL - 3XL (Inseam): 30.5"

Petite: XXS - 3XL (Inseam): 28"

Tall: XS - 3XL (Inseam): 33"

CBL	RYL	GBL	TNY	TBL	SKY	HTR	LVR
SBP	PEW	BLK	WHT	WIN	CRD	EGP	



7348

WOMEN'S LOGO WAISTBAND 7-POCKET PANT



Women's full elastic logo waistband tapered pant. Dyed-to-match drawstring. Two front slant patch pockets with a utility pocket. Two back patch pockets. One cargo pocket with scissor pocket. Side vents.

Reg: XXS - XL (Inseam): 30.5"

Plus: 2XL - 3XL (Inseam): 30.5"

Petite: XXS - 3XL (Inseam): 28"

Tall: XS - 3XL (Inseam): 33"

CBL	RYL	GBL	TNY	TBL	SKY	HTR	
SBP	PEW	BLK	WHT	WIN	LVR	EGP	



COOLMAX

UPF⁴⁰⁺

8708

WOMEN'S SPORTY
MESH PANEL JACKET

Women's round neck knit rib collar jacket. Mesh side panels. Dyed-to-match nylon zipper front. Half rib trim cuff. Two curved front pockets. Two small mesh pockets at side panels. One large hidden pocket.

Reg: XXS - XL (M): 27"

Plus: 2XL - 3XL (M): 27"

CBL	TNY	WIN	FEW	BLK	WHT
-----	-----	-----	-----	-----	-----



8728

WOMEN'S BACK
MESH PANEL SHORT
SLEEVE ZIP JACKET

Women's short sleeve round neck zipper jacket. Dyed-to-match zipper front. Three patch pockets with one hidden pocket and inner utility loop. Curved back yoke with mesh panel and piping inside. Front and back seams. Side vents.

Reg: XXS - XL (M): 28.25"

Plus: 2XL - 3XL (M): 28.25"

CBL	TNY	BLK	WHT
-----	-----	-----	-----





5208

MEN'S ONE CHEST POCKET V-NECK TOP

Men's V-neck top. One chest pocket with a pen slot. Side vents.



Reg: **XXS - XL** (M): 30.75"
Plus: **2XL - 3XL** (M): 30.75"

CBL	RYL	TNY	PEW	BLK
-----	-----	-----	-----	-----

5308

MEN'S MESH PANEL 3-POCKET V-NECK TOP

Men's V-neck top. Two front patch pockets with a utility pocket.

One chest pocket with a pen slot. Decorative mesh panel at shoulder and back yoke. Side vents.



Reg: **XXS - XL** (M): 30.75"
Plus: **2XL - 3XL** (M): 30.75"

CBL	RYL	TNY	CRB	HTR
WIN	KHI	PEW	CHR	BLK

8308

MEN'S HALF ELASTIC 8-POCKET CARGO PANT

Men's half elastic waistband tapered pants. Functional front fly with zipper. Dyed-to-match inner drawstring. Side panels. Two front slant pockets. Two cargo pockets with inner utility loop and a pen slot. One mesh pocket with twill tape at side panel. Two back patch pockets.



Reg: **XXS - XL** (Inseam): 31"
Plus: **2XL - 3XL** (Inseam): 31"
Petite: **XXS - 3XL** (Inseam): 28.5"

CBL	RYL	TNY	CRB	HTR
WIN	KHI	PEW	CHR	BLK

Tall: **XS - 3XL** (Inseam): 33.5"

CBL	RYL	TNY	HTR
WIN	KHI	PEW	BLK

Tall: **XS - 2XL** (Inseam): 33.5"

CHR	CRB
-----	-----





pure

S o f t

The collection name says it all.
 When you need a **super soft**
and cozy collection,
 look no further.
 Casually **sophisticated**
 with all the stretch for your ultimate
 comfort and performance.



1901

WOMEN'S 3-PANELS V-NECK TOP



Women's curved V-neck top.
 Two front slant pockets with
 a cell pocket. Front princess
 seams and curved back yoke. Side vents.

Reg: XXS - XL (M): 27.75"
 Plus: 2XL - 3XL (M): 27.75"

CBL	RYL	NVY	TRQ	CRS
WHT	WIN	PSR	PEW	BLK

TOP
1901 TRQ

BOTTOM
7901 TRQ

96% Polyester / 4% Spandex

High Performance

Soft, velvety fabric • Durable and flexible • Professional look

PURE SOFT

7901

WOMEN'S REFLECTIVE TAPERED PANT

Women's full elastic waistband tapered pant. Dyed-to-match drawstring. Two front patch pockets with utility reflective tape. Two back patch pockets. Two cargo pockets. Side vents.

Reg: XXS - XL (Inseam): 30.5"
 Plus: 2XL - 3XL (Inseam): 30.5"
 Petite: XS - 3XL (Inseam): 28"
 Tall: XS - 2XL (Inseam): 33"



1902

WOMEN'S MODERN V-NECK TOP

Women's curved V-neck top. Decorative back mesh panel below neckband. Two front curved pockets with utility pocket. Front princess seam and back darts. Side vents.

Reg: XXS - XL (M): 27.75"
 Plus: 2XL - 3XL (M): 27.75"



7902

WOMEN'S MODERN YOGA PANT

Women's tapered pant with yoga style waistband. Dyed-to-match drawstring. Two front slant pockets with a utility pocket. One cargo pocket. Two back patch pockets. Adjustable zipper at hemlines.

Reg: XXS - XL (Inseam): 30.5"
 Plus: 2XL - 3XL (Inseam): 30.5"
 Petite: XS - 3XL (Inseam): 28"
 Tall: XS - 2XL (Inseam): 33"



blossom



Elevate your look

with the perfect features.

The pop of color in our details creates a classic collection.



1102

WOMEN'S MOCK-WRAP TOP



Princess seams for added style and shape. Two lower pockets with double utility pockets. Triple needle stitching at all pockets, princess seams and neckline. Inner utility loop at pocket. Contrast bartacks. Side vents.

Reg: XS - XL (M): 27.5" Plus: 2XL - 3XL (M): 27.5"



▲ - CONTRAST COLOR

TOP
1102 CHR

BOTTOM
9102 CHR

55% Cotton / 42% Polyester / 3% Spandex

High Comfort Stretch

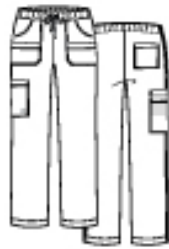
Breathable stretch fabric • Comfortable fit • Stylish stitching detail

BLOSSOM

9202

WOMEN'S UTILITY CARGO PANT

Ladies boot-cut leg with full elastic waistband. Two front multi-pockets and one back patch pocket. One cargo pocket and inner utility pocket. Triple needle stitching at front and cargo pockets. Contrast drawstring and bartacks.



Reg: XS - XL (Inseam): 30.5" Petite: XS - 3XL (Inseam): 28"
Plus: 2XL - 5XL (Inseam): 30.5" Tall: XS - 3XL (Inseam): 33.5"



▲ - CONTRAST COLOR

1202

WOMEN'S 3-POCKET V-NECK TOP

One chest pocket with double stitching. Two lower pockets with double utility pockets. Triple needle stitching at lower pockets. Inner utility loop at pocket. Contrast bartacks. Side vents.



Reg: XS - XL (M): 27.5" Plus: 2XL - 3XL (M): 27.5"

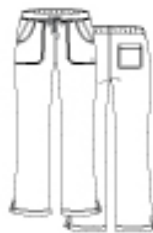


▲ - CONTRAST COLOR

9102

WOMEN'S MULTI-POCKET FLARE PANT

Ladies flare leg with flat front and elastic back waistband. Four front pockets and one back patch pocket. Triple needle stitching at waist and front pockets. Contrast drawstring and bartacks. Side vents.



Reg: XS - XL (Inseam): 31"
Plus: 2XL (Inseam): 31"
Petite: XS - 2XL (Inseam): 28"



▲ - CONTRAST COLOR





RED PANDA

Classically perfect,
so lightweight and durable.



TOP
1716 CPK
5206 HTR

BOTTOM
9716 CPK
8206 HTR

65% Polyester / 35% Cotton

High Durability

Lightweight • Long-lasting • Durable fabric • Comfortable

RED PANDA

1716**WOMEN'S V-NECK
TWO POCKET TOP**

Women's basic V-neck top. Two front patch pockets with an inner utility loop. Side vents.

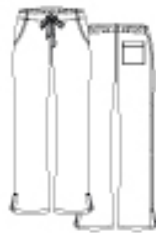


Reg: XXS - XL (M): 27.75"
Plus: 2XL - 5XL (M): 27.75"

CBL	RYL	GBL	TNY	TRQ	TEL	CRB	SGN	OLV
HTR	EGP	WIN	RED	CPK	KHI	PEW	BLK	WHT

**9716****WOMEN'S HALF
ELASTIC PANT**

Women's half elastic waistband with straight leg pant. Dyed-to-match drawstring. Two front curved pockets. One back patch pocket. Side vents.



Reg: XXS - XL (Inseam): 30.5"
Plus: 2XL - 5XL (Inseam): 30.5"
Petite: XS - 3XL (Inseam): 28"
Tall: XS - 3XL (Inseam): 33"

CBL	RYL	GBL	TNY	TRQ	TEL	CRB	SGN	OLV
HTR	EGP	WIN	RED	CPK	KHI	PEW	BLK	WHT

Petite: XXS - 2XL (Inseam): 28"
Tall: XS - XL (Inseam): 33"

EGP	GBL	TRQ	SGN	OLV
-----	-----	-----	-----	-----

**8706****WOMEN'S WARM-UP
JACKET**

Women's round neck long sleeve jacket. Dyed-to-match snap front. Half rib trim cuff. Two front patch pockets with double pocket and inner utility loop. Side vents.



Reg: XS - XL (M): 28.5"
Plus: 2XL - 5XL (M): 28.5"

CBL	RYL	TNY	HTR	WIN	RED	PEW	BLK	WHT
-----	-----	-----	-----	-----	-----	-----	-----	-----





1726

WOMEN'S CURVED MOCK-WRAP TOP

Women's curved mock-wrap top. Two front patch pockets with a utility pocket and inner utility loop. Side vents.



Reg: XXS - XL (M): 27.75"
Plus: 2XL - 5XL (M): 27.75"

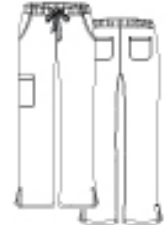
CBL	RYL	GBL	TNY	TRQ	TEL	CRB	SGN	OLV
HTR	EGP	WIN	RED	CPK	BPK	KHI	PEW	BLK
WHT								



9726

WOMEN'S FULL ELASTIC CARGO PANT

Women's full elastic waistband with straight leg pant. Dyed-to-match drawstring. Two front curved pockets. One cargo pocket. Two back patch pockets. Side vents.



Reg: XXS - XL (Inseam): 30.5"
Plus: 2XL - 5XL (Inseam): 30.5"
Petite: XS - 3XL (Inseam): 28"
Tall: XS - 3XL (Inseam): 33"

CBL	RYL	GBL	TNY	TRQ	TEL	CRB	SGN	OLV
HTR	EGP	WIN	RED	CPK	BPK	KHI	PEW	BLK
WHT								

65% Polyester / 35% Cotton

High Durability

Lightweight • Long-lasting • Durable Fabric • Comfortable

RED PANDA

5206

MEN'S 3-POCKET V-NECK TOP



Men's V-neck top. Two front patch pockets with a utility pocket. One chest pocket with a pen slot. Side vents.

Reg: XS - XL (M): 30.75"

Plus: 2XL - 5XL (M): 30.75"



8206

MEN'S FULL ELASTIC 10-POCKET CARGO PANT



Men's full elastic waistband with tapered pant. Dyed-to-match drawstring. Decorative front fly. Two front slash pockets. Two cargo pockets with pen slots. Two back patch pockets with loop.

Reg: XS - XL (Inseam): 31"

Plus: 2XL - 5XL (Inseam): 31"

Tall: XS - 3XL (Inseam): 33.5"



Short: XS - 3XL (Inseam): 28.5"



Short: XS - 4XL (Inseam): 28.5"





1706

UNISEX V-NECK TOP

Unisex V-neck top. One chest pocket with a pen slot. Side vents.

Reg: XXS - XL (M): 27.75"
Plus: 2XL - 5XL (M): 27.75"



CBL	RYL	GBL	TNY	TRQ	TEL	CRB	SGN	OLV
HTR	EGP	WIN	RED	CPK	IOH	PEW	BLK	WHT



9706

UNISEX BASIC PANT

Women's half elastic waistband with straight leg pant. Dyed-to-match drawstring. Two front curved pockets. One back patch pocket. Side vents.

Reg: XXS - XL (Inseam): 30.75"
Plus: 2XL - 5XL (Inseam): 30.75"
Petite: XXS - 2XL (Inseam): 28.25"
Tall: XS - XL (Inseam): 33.25"



CBL	RYL	GBL	TNY	TRQ	TEL	CRB	SGN	OLV
HTR	EGP	WIN	RED	CPK	KHE	FEW	BLK	WHT

65% Polyester / 35% Cotton

High Durability

Lightweight • Long-lasting • Durable Fabric • Comfortable

RED PANDA

8716

UNISEX SNAP JACKET

Unisex round neck long sleeve jacket. Dyed-to-match ring-snap front. Full rib trim cuff. Two front slant patch pockets with a utility pocket and inner utility loop. Side vents.



Reg: XXS - XL (M): 29.25"
Plus: 2XL - 5XL (M): 29.25"

TEL RYL TNY PEW BLK



CORE

Comfortable core
essentials that are
extremely durable
to get the job done.



TOP
1006 RYL
1006 MBL

BOTTOM
9006 RYL
9006 MBL

65% Polyester / 35% Cotton

High Durability

Engineered poplin fabric • Durable fabric • Comfortable fit

CORE

1006

UNISEX V-NECK TOP

Unisex V-neck top.
One chest pocket with a pen slot.
Side vents.



Reg: XXS - XL (M): 27.75"
Plus: 2XL - 5XL (M): 27.75"

CBL	RYL	NAVY	TEL	CRB	HTR	WIN	RED	HPK
KHI	PEW	BLK	WHT	MBL	LBL	PPL	CHC	



1016

WOMEN'S CLASSIC V-NECK TOP

Women's V-neck top. Two front patch pockets with an inner utility pocket. Inner utility loop. Side vents.



Reg: XXS - XL (M): 27.75"
Plus: 2XL - 5XL (M): 27.75"

CBL	RYL	MBL	NAVY	LBL	TEL	CRB	HTR	PPL
WIN	RED	HPK	CHC	KHI	PEW	BLK	WHT	



9006

UNISEX SEAMLESS PANT

Unisex straight leg pant.
Dyed-to-match drawstring.
One back patch pocket. Side vents.



Reg: XXS - XL (Inseam): 31"
Plus: 2XL - 5XL (Inseam): 31"
Petite: XS - 3XL (Inseam): 28"
Tall: XS - 3XL (Inseam): 33"

CBL	RYL	NAVY	TEL	CRB	HTR	WIN	RED	HPK
KHI	PEW	BLK	WHT	MBL	LBL	PPL	CHC	



9016

WOMEN'S FULL ELASTIC WAISTBAND CARGO PANT

Women's full elastic waistband straight leg pant. Two front slash pockets. One cargo pocket with an inner utility pocket.



Reg: XXS - XL (Inseam): 31"
Plus: 2XL - 5XL (Inseam): 31"
Petite: XS - 3XL (Inseam): 28"
Tall: XS - 3XL (Inseam): 33"

CBL	RYL	MBL	NAVY	LBL	TEL	CRB	HTR	PPL
WIN	RED	HPK	CHC	KHI	PEW	BLK	WHT	





1026

WOMEN'S CONTRAST MOCK-WRAP TOP



Women's mock-wrap top. Contrast neck binding. Two front patch pockets with an inner utility pocket and utility loop. Side vents.

Reg: XXS - XL (M): 26.25"

Plus: 2XL - 5XL (M): 26.25"



WHT-WHT

▲ - CONTRAST COLOR



9026

WOMEN'S CLASSIC FLARE PANT



Women's elastic back waistband flare leg pant. Dyed-to-match drawstring. Two front curved pockets with an inner utility pocket. One back patch pocket. Side vents.

Reg: XXS - XL (Inseam): 31"

Plus: 2XL - 5XL (Inseam): 31"

Petite: XS - 3XL (Inseam): 28"

Tall: XS - 3XL (Inseam): 33"



9626

WOMEN'S UTILITY CARGO PANT



Women's elastic back waistband straight leg pant. Dyed-to-match drawstring. Two front curved pockets. Two back patch pocket. One cargo pocket with an inner utility pocket. Side vents.

Reg: XXS - XL (Inseam): 31"

Plus: 2XL - 5XL (Inseam): 31"

Petite: XS - 3XL (Inseam): 28"

Tall: XS - 3XL (Inseam): 33"



90% Polyester / 10% Lycra

High Comfort Stretch

Super soft • Ultra-stretch Lycra fabric • Form-fitting to keep you warm

BESTEE

6909

**WOMEN'S BASIC
LONG SLEEVE
UNDERSCRUB TEE**



Bestee

Round neck long sleeve tee made with Lycra® fabric to keep elasticity. Inner back neckband for added style Heat transferred sleeve patch at the sleeve hem.



Reg: XXS - XL (M): 26.75"
Plus: 2XL - 3XL (M): 26.75"

CBL	RYL	NVY	WIN	PEW	BLK
WHT	CRS	HGR	MSV	RED	

FASHION COLORS

ALM	AQU	RTL
LOO	PPC	UVI



Ultra-stretch soft fabric • Lightweight • Antimicrobial and moisture-wicking

KNITS

6709

**WOMEN'S BASIC
LONG SLEEVE
UNDERSCRUB TEE**



Round neck long sleeve tee made with COOLMAX® moisture-wicking performance fabric to keep you warm and dry all day.

60% Rayon
35% Polyester
5% Spandex



Reg: XS - XL (M): 26.75"
Plus: 2XL - 3XL (M): 26.75"

CBL	RYL	NVY	TBL	APL	SKY
PEW	BLK	WHT	WIN	HPK	BLP



KNITS

6809

**WOMEN'S BASIC
LONG SLEEVE STRIPED
UNDERSCRUB TEE**



Round neck long sleeve striped tee that is antimicrobial to reduce bacterial growth, and helps eliminate germs and odors.

80% Nylon
20% Spandex



Reg: XS - XL (M): 26.75"
Plus: 2XL - 3XL (M): 26.75"

SKY	BLP	WHT
-----	-----	-----





BLAZE

Look your professional best
and enjoy comfort with this
lightweight jacket.
It provides the
perfect amount
of warmth.

TOP
3814 BLK
5308 PEW

BOTTOM
8308 PEW

100% Polyester Bonded Fleece

High Comfort Stretch

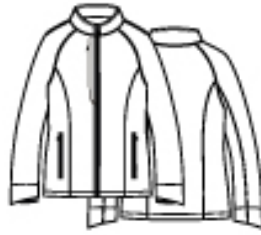
Soft, breathable fabric • Insulated interior • Lightweight

BLAZE

3812

WOMEN'S WARM-UP BONDED FLEECE JACKET

Women's bonded fleece jacket with raglan style sleeve. Front closed zipper. Two front zipper pockets and one hidden chest zipper pocket. Asymmetric sleeve hemline with internal knit fabric. Shoulder darts, front and back vertical seams. Front and chest pocket bags made by breathable mesh fabric.



Reg: XS - XL (M): 27"
Plus: 2XL - 3XL (M): 27"

RYL Nvy PEW BLK



3814

MEN'S WARM-UP BONDED FLEECE JACKET

Men's bonded fleece jacket with raglan style sleeve. Front closed zipper. Two front zipper pockets and one hidden chest zipper pocket. Shoulder darts and waist seam. Front and chest pocket bags made by breathable mesh fabric.



Reg: SM - XL (M): 28.5"
Plus: 2XL - 3XL (M): 28.5"

BLK



LAB COATS

bring your a game to the office, look your professional best while you enjoy comfort and functionality.



NEW STYLE

MOMENTUM

100% Polyester
Mechanical Stretch

5071

WOMEN'S 36" LAB COAT

Women's notched collar lab coat. Size small 36" center back length. Dyed-to-match buttons at front.

Two large patch pockets with a small utility pocket. One chest pocket with a pen slot. One hidden pocket on the left side. Front and back princess seams for added style and shape. Back waistband. Center back vent.



Reg: XXS - XL (M): 36.5"

Plus: 2XL - 3XL (M): 36.5"

WHIT



NEW STYLE

MOMENTUM

100% Polyester
Mechanical Stretch

5072

WOMEN'S 32" LAB COAT

Women's notched collar lab coat. Size small 32" center back length. Dyed-to-match buttons at front. One chest pocket. Two large patch pockets with a small utility pocket. One hidden pocket on the left side. Waistband and front dart for added style and shape. Center back vent.

Two large patch pockets with a small utility pocket. One hidden pocket on the left side. Waistband and front dart for added style and shape. Center back vent.



Reg: XXS - XL (M): 32.5"

Plus: 2XL - 5XL (M): 32.5"

WHIT

NEW STYLE

MOMENTUM

100% Polyester
Mechanical Stretch

5073

**WOMEN'S
CONSULTATION
LAB COAT**



Women's notched consultation lab coat. Size small 29" center back length. Dyed-to-match buttons at front. Two large patch pockets with a small utility pocket. Front and back darts for added style and shape. Back waistband. Center back vent.

Reg: XXS - XL (M): 29.5"
Plus: 2XL - 5XL (M): 29.5"

WHT



NEW STYLE

MOMENTUM

100% Polyester
Mechanical Stretch

5973

**WOMEN'S FITTED
CONSULTATION
LAB COAT**



Women's notched consultation lab coat. Size small 29" center back length. Dyed-to-match buttons at front. One chest pocket. Two large patch pockets. Front and back princess seam for added style and shape. Back waistband.

Reg: XXS - XL (M): 29.5"
Plus: 2XL - 5XL (M): 29.5"

WHT



NEW STYLE

MOMENTUM

100% Polyester
Mechanical Stretch

5871

**MEN'S 40"
LAB COAT**



Men's notched collar full length lab coat. Size small 40" center back length. Dyed-to-match buttons at front. One chest pocket with a pen slot. Two large patch pockets with a small utility pocket. One hidden pocket on the left side. Back waistband. Center back vent.

Reg: XXS - XL (M): 40.5"
Plus: 2XL - 5XL (M): 40.5"

WHT



LAB COATS

Lightweight • Durable fabric • Comfortable fit



NEW STYLE

MOMENTUM

100% Polyester
Mechanical Stretch

5872

MEN'S 36" LAB COAT

Men's notched collar mid length lab coat. Size small 36" center back length. Dyed-to-match buttons at front. One chest pocket with a pen slot. Two large patch pockets with a small utility pocket. One hidden pocket on the left side. Center back vent.



Reg: **XXS - XL** (M): 36.5"
Plus: **2XL - 5XL** (M): 36.5"

WHT



RED PANDA

65% Polyester 35% Cotton

7116

WOMEN'S CONSULTATION LAB COAT

Women's collar consultation lab coat. Dyed-to-match button front. Chest pocket with a pen slot. Two large patch pockets for mini tablet. Center back vent at hem.



Reg: **XS - XL** (M): 29"
Plus: **2XL - 3XL** (M): 29"

WHT



RED PANDA

65% Polyester 35% Cotton

7126

WOMEN'S 3/4 SLEEVE LAB COAT

Women's notched collar consultation lab coat. Dyed-to-match button front. Two large patch pockets for mini tablet. Center back belt with darts. Sleeve cuff with back vents. Center back vent at hem.



Reg: **XS - XL** (M): 29"
Plus: **2XL - 3XL** (M): 29"

WHT

RED PANDA 65% Polyester 35% Cotton

7156

WOMEN'S LONG LAB COAT



Women's notched collar lab coat. Dyed-to-match button front. Chest pocket with a pen slot. Two large patch pockets for mini tablet. Side access slits. Back belt with dyed-to-match buttons. Center back vent and side vents at hem.

Reg: XS - XL (M): 37.5"
Plus: 2XL - 3XL (M): 37.5"

WHT



RED PANDA 65% Polyester 35% Cotton

7216

MEN'S CONSULTATION LAB COAT



Men's notched collar consultation lab coat. Dyed-to-match button front. Chest pocket with a pen slot. Two large patch pockets for mini tablet. Center back vent at hem.

Reg: XS - XL (M): 30.5"
Plus: 2XL - 5XL (M): 30.5"

WHT



RED PANDA 65% Polyester 35% Cotton

7256

MEN'S LONG LAB COAT



Men's notched collar lab coat. Dyed-to-match button front. Chest pocket with a pen slot. Two large patch pockets for mini tablet. Side access slits. Back belt with dyed-to-match buttons. Center back vent and side vents at hem.

Reg: XS - XL (M): 42.5"
Plus: 2XL - 5XL (M): 42.5"

WHT



LAB COATS

Lightweight • Durable fabric • Comfortable fit



CORE 65% Polyester 35% Cotton

7151

LADIES CONSULTATION LAB COAT

Women's notched collar lab coat. Dyed-to-match button front. Chest pocket with a pen slot. Two front patch pockets with a utility pocket and inner utility loop. Center back belt with dyed-to-match buttons.

Reg: XS - XL (M): 30.5"
Plus: 2XL - 3XL (M): 30.5"

WHT



CORE 65% Polyester 35% Cotton

7551

UNISEX LAB COAT

Unisex notched collar lab coat. Dyed-to-match button front. Chest pocket with a pen slot. Two front patch pockets and hidden patch pocket inside. Side access slits. Center back vent at hem.

Reg: XS - XL (M): 35.5"
Plus: 2XL - 5XL (M): 35.5"

WHT



SMART 96% Polyester 4% Spandex

8801

LADIES 3/4 SLEEVE ZIP LAB JACKET



Ladies 3/4 sleeve zip jacket with side vents. Fashion collar. Two way front zipper. Front princess seam. Two front pockets with inner pockets. Back darts with buttoned waist belt. Side vents.

Reg: **XXS - XL** (M): 28"
Plus: **2XL - 4XL** (M): 28"

PEW **BLK** WHT



SMART 96% Polyester 4% Spandex

8802

LADIES 1/2 SLEEVE CONTRAST TRIM JACKET



Ladies 1/2 sleeve contrast trim jacket with side vents. Fashion collar. Two way front zipper. Front and back princess seams. Two front patch pockets. Waist belt on side panel. Decorative buttons on sleeve and waist belt. Side vents.

Reg: **XXS - XL** (M): 29"
Plus: **2XL - 4XL** (M): 29"

BLK-WHT **BLK-PEW** WHT/WHT WHT-BLK

▲ - CONTRAST COLOR



SMART 96% Polyester 4% Spandex

8803

LADIES 3/4 SLEEVE LAB JACKET



Ladies rounded neckline and 3/4 sleeve with vent. Front double side zipper. Two front curved pockets with a utility pocket. Side vents.

Reg: **XXS - XL** (M): 29"
Plus: **2XL - 3XL** (M): 29"

NVY PEW **BLK** WHT



PRINTS

92% Polyester / 8% Spandex

High Comfort Stretch

Wrinkle-resistant • Soft and flexible fabric • Comfortable fit



Prints

1767

WOMEN'S V-NECK
PRINT TOP



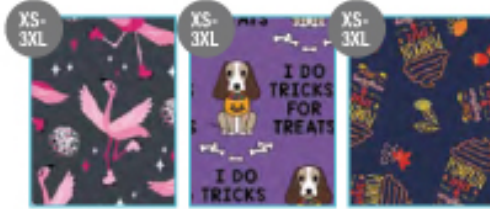
Reg: XS - XL (M): 27.75"
Plus: 2XL - 3XL (M): 27.75"
Plus: 4XL - 5XL (M): 27.75" (Select Styles)

Women's printed v-neck top. Front princess seams and back darts for added style and shape. Two lower patch pockets with inner utility pocket. Inner utility loop at pocket. Solid contrast at neckband and back facing. Side vents.

SPRING 2022



FALL/WINTER 2021



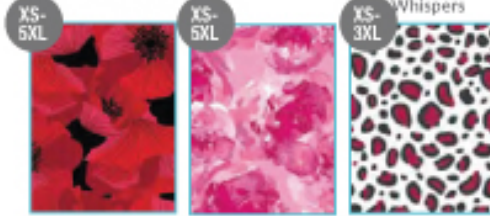
DDZ Disco Daze **DGT** Doggy Treats **EVN** Everything Nice



KTD Kitties in Disguise **SPK** Super Kids **AWW** Abstract Wavy



SWG Sweet Goodness **DYG** Do You Gnomie? **WFW** Wildflower Whispers



MDN Midnight Garden **PNP** Peony Pink **QSV** Quiet Savage



NBM Night Blooming **DWG** Dawn Garden **SBM** Shower of Blossom

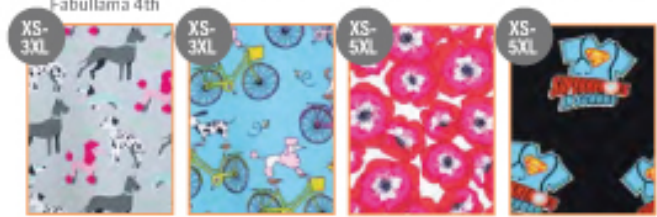


PLP Pastel Leopard **SFR** Safari Pink

SUMMER 2021



HFL Have a Fabullama 4th **BFZ** Brain Freeze **CHV** Cupcake Heaven **DDS** Ducky Docs



PPS Paw Pals **PSR** Pawsome Ride **PPP** Pretty Poppies **SHR** Superhero

SPRING 2021



BEM Bee Mine **EEH** Easter Egg Hunt **HGO** Hello Gorgeous **MOB** Monkey Business



FSS Forever Seashells **SBU** Some Bunny Loves You

READYGO



READYGO

NB003/NB003S

CLINICAL BACKPACK

Dimension: 16" [H] x 12" [W] x 7.5" [D]

Front Pocket Height: 10"

Side Pocket Height: 7"

Exterior Pocket: 9" [H] x 11.5" [W]

Lightweight, durable, water-resistant polyester fabric. Easy-to-clean surface. Padded tech pocket that holds a 15" laptop. Built-in padded shoulder straps. Backpack straps can be tucked inside the back slip pocket. Large front zipper pocket with extra built-in interior pockets. Interior zipper pocket, mesh pocket and two elastic pockets. 100% vegan leather trim.



READYGO

NB005/NB006

CLINICAL MINI

Dimension: 13" [H] x 10.5" [W] x 5.5" [D]

Front Pocket Height: 8"

Side Pocket Height: 7"

Exterior Pocket: 8" [H] x 10" [W]

Lightweight, durable, water-resistant polyester fabric. Easy-to-clean surface. Built-in padded shoulder straps. Backpack straps can be tucked inside the back slip pocket. Large front zipper pocket with extra built-in interior pockets. Interior zipper pocket, mesh pocket and two elastic pockets. Interior pocket that holds devices up to 9.5" [W] x 10" [H]. 100% vegan leather trim.



READYGO

NB007

CLINICAL BACKPACK

Dimension: 14" [H] x 10" [W] x 7" [D]

Front Pocket Height: 6.8"

Side Pocket Height: 6.5"

Exterior Pocket: 7.5" [H] x 10" [W]

Lightweight, durable, water-resistant polyester fabric. Can fit devices up to 10" [W] x 14" [H]. Large front zipper pocket with extra built-in interior pockets. Two side pockets with adjustable velcro straps. Interior zipper pocket, mesh pocket and two elastic pockets. Interior pocket holds tech devices up to 8" [W] x 9" [H]. 100% vegan leather trim.



BLK



READYGO

NB011

CLINICAL CLUTCH

Dimension: 6.75" [H] x 9.5" [W] x 2.5" [D]

Handle Drop: 1.5"

Strap Drop: Long: 22.5" | Short: 12.5"

Lightweight, durable, water-resistant polyester fabric. Easy-to-clean surface. Detachable crossbody strap with metal clips. Back zipper pocket. Clear plastic slider pocket. Two mesh pockets. Four elastic bands inside to hold tools. Can hold blood pressure cuff and stethoscope comfortably with room for extra storage. 100% vegan leather trim.



BLK



BRY



PNK



NVY



CHT



CAMO



READYGO

NB012

READYGO CLINICAL UNISEX BACKPACK

Dimension: 16" [H] x 14" [W] x 7.25" [D]

Front Pocket Height: 7.25"

Side Pocket Height: 8"

Tech Pocket Height: 15.75"

Lightweight, durable, water-resistant polyester fabric. Easy-to-clean surface. Padded shoulder straps with adjustable webbing strap for extra length. Large front zipper pocket with interior slip pockets, mesh pockets and divided utility pockets. Hole for wired earphones. Large interior pocket for tech devices up to 15" [H].



BLK



READYGO

NEW STYLE

NB015

READYGO DOCTOR'S SATCHEL

Dimension: 12" [H] x 14.5" [W] x 7" [D]

Front Pocket Height: 8.5"

Side Pocket Height: 7"

Interior Tech Pocket: 8" [H] x 13.5" [W]

Water-resistant polyester fabric. Large front zipper pocket with extra built-in interior pockets. Two side pockets. Back slip pocket with velcro tab closure. Interior padded tech sleeve (fits up to 13" laptop), one mesh pocket, one zipper pocket and two elastic pockets. Vegan leather top handle and detachable adjustable webbing strap. 100% vegan leather trim. Spot cleaning recommended.



BLK



HGR

SCRUB CAP

NC010

UNISEX CAP

One size fits all.

Cotton rich, stretch, and ultra soft fabric. Cool and lightweight. Terry-cloth sweatband feature. Back elastic. Adjustable, tie-back closure.

60% Cotton 37% Polyester 3% Spandex

RPK	CRB	CYB	LGN	RSB	SGN	TEL
-----	-----	-----	-----	-----	-----	-----



SCRUB CAP

NC020

UNISEX BOUFFANT CAP

One size fits all.

Cotton rich, stretch, and ultra soft fabric. Cool and lightweight. Terry-cloth sweatband feature. Back elastic. Adjustable, tie-back closure.

ECOFLEX FABRIC 60% Cotton 37% Rayon 3% Spandex

RSB	CRB	CYB	LGN	RPK	IDG	SGN	PNV	AQU
-----	-----	-----	-----	-----	-----	-----	-----	-----

BLOSSOM FABRIC 55% Cotton 42% Polyester 3% Spandex

MBLB	PCBB	IBLB	NVYB	TNYB	THRB	WINB	CHRB	KHIB
CPKB	HPKB	PEWB	BLKB	WHTB	DCPB	TPLB	HTRB	RNVB

PRIMAFLEX FABRIC 52% Cotton 35% Polyester 13% Elastereil-P (Lycra)

RYLP	CRBP	SCBP	LIMP	AZLP	RPKP	PEWP	AGRP	BLKP	TNYP
------	------	------	------	------	------	------	------	------	------

RED PANDA FABRIC 65% Polyester 35% Cotton

CBLD



SCRUB CAP

NC015

UNISEX CAP WITH BUTTON

One size fits all.

Cotton rich, stretch, and ultra soft fabric. Cool and lightweight. Terry-cloth sweatband feature. Back elastic. Adjustable, tie-back closure. One button on the side.

ECOFLEX FABRIC 60% Cotton 37% Rayon 3% Spandex

RSB	CRB	CYB	IDG	RPK	PNV	AQU
-----	-----	-----	-----	-----	-----	-----

EON FABRIC 59% Polyester 22% Rayon 19% Elastereil-P

BLKA	CSLA	CPKA	CRBA	EGPA	GBLA	HPKA	WINA
MBLA	NVYA	PEWA	RYLA	TELA	WHTA	HTRA	

BLOSSOM FABRIC 55% Cotton 42% Polyester 3% Spandex

CBLS	MBLS	PCBB	RYLB	IBLB	NVYB	TELB	CRSS	HTRB
THRB	WINB	TPLB	CPKB	HPKB	PEWB	CHRB	BLKB	WHTB
DCRB	AGRB	RNVB	TNYB	IDIB				

PRIMAFLEX FABRIC 52% Cotton 35% Polyester 13% Elastereil-P (Lycra)

AGRP	CRBP	SCBP	LIMP	AZLP	RPKP	TNYP	BLKP
------	------	------	------	------	------	------	------

RED PANDA FABRIC 65% Polyester 35% Cotton

CBLD



PRINT CAP

92% Polyester 8% Spandex

NC015

 **GMW**
Gnome Matter
What

 **TPP**
Tropical Paradise

NC020

 **ANM**
Animalia

 **BIB**
Birds in Bloom

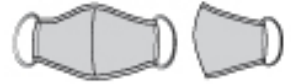
 **FVF**
Forever Friends



MASK

CM010

REUSABLE CLOTH
FACE MASK



Available Sizes: Small, Medium, Large



Agion antimicrobial treatment.
Two layers of soft, comfortable fabric.
Washable, reusable and eco-friendly.

BPK MNT LGY BLK IDG



MASK

MA010

MASK ADAPTOR

One size fits all.

Easy to use. Washable, stretchy elastic bands.
Button on each end to secure mask in place.
Helps prevent mask cutting into the back of ears.

CH NYY BLK



MASK

MA020

MASK EXTENDER

One size fits all.

Adjustable cord-lock. Can be worn securely across
the back of the head as an ear saver. Can be worn
loosely around the back of the neck as a mask holder.
Comfortable elastic cord. Easy clip plastic clasps.

BLK

74% Polyester / 20% Rayon / 6% Spandex | High Performance

MATRIX PRO



NEW STYLE

3902
WOMEN'S ACTIVE
KNIT V-NECK TOP

Reg: XXS - XL (M): 27.25"
Plus: 2XL - 3XL (M): 27.25"



NEW STYLE

6902
WOMEN'S FULL WAIST
JOGGER PANT

Reg: XXS - XL (Inseam): 28.5"
Plus: 2XL - 3XL (Inseam): 28.5"
Petite: XS - 2XL (Inseam): 26"
Tall: XS - 2XL (Inseam): 31"



NEW STYLE

5902
MEN'S 3-POCKET
V-NECK TOP

Reg: XS - XL (M): 30.25"
Plus: 2XL - 3XL (M): 30.25"



NEW STYLE

8902
MEN'S FULL ELASTIC
WAISTBAND JOGGER
PANT

Reg: XS - XL (Inseam): 29"
Plus: 2XL - 3XL (Inseam): 29"
Petite: XS - 2XL (Inseam): 26.5"
Tall: XS - 2XL (Inseam): 31.5"



3901
CONTRAST LAYERED
V-NECK TOP

Reg: XXS - XL (M): 27.25"
Plus: 2XL - 3XL (M): 27.25"



6901
CONTRASTED YOGA
WAISTBAND PANT

Reg: XXS - XL (Inseam): 31"
Plus: 2XL - 3XL (Inseam): 31"
Petite: XS - 2XL (Inseam): 28.25"
Tall: SM - XL (Inseam): 33.5"



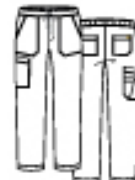
7091
COMFY WARM-UP
JACKET

Reg: XS - XL (M): 27.25"
Plus: 2XL - 3XL (M): 27.25"



5901
MEN'S CONTRAST
PIPING V-NECK TOP

Reg: XS - XL (M): 30.25"
Plus: 2XL - 3XL (M): 30.25"



8901
MEN'S HALF ELASTIC
WAISTBAND
CARGO PANT

Reg: XS - XL (Inseam): 31"
Plus: 2XL - 3XL (Inseam): 31"
Short: XS - 2XL (Inseam): 28.5"

92% Polyester / 8% Spandex | High Comfort Stretch

MATRIX IMPULSE



4510
WOMEN'S CONTRAST
CURVED V-NECK TOP

Reg: XXS - XL (M): 27.25"
Plus: 2XL - 3XL (M): 27.25"



4520
WOMEN'S CONTRAST
KNIT PANEL
MOCK-WRAP TOP

Reg: XXS - XL (M): 27.25"
Plus: 2XL - 3XL (M): 27.25"



7510
WOMEN'S ROUND NECK
SNAP JACKET

Reg: XS - XL (M): 27.75"
Plus: 2XL - 3XL (M): 27.75"



4511
WOMEN'S CURVED
V-NECK TOP

Reg: XXS - XL (M): 27.25"
Plus: 2XL - 3XL (M): 27.25"



4521
WOMEN'S KNIT PANEL
MOCK-WRAP TOP

Reg: XXS - XL (M): 27.25"
Plus: 2XL - 3XL (M): 27.25"



8510
FULL ELASTIC
WAISTBAND PANT

Reg: XXS - XL (Inseam): 30.5"
Plus: 2XL - 3XL (Inseam): 30.5"
Petite: XXS - 2XL (Inseam): 28"

GROUP SALES

MATRIX

65% Polyester / 32% Rayon / 3% Spandex | High Comfort Stretch



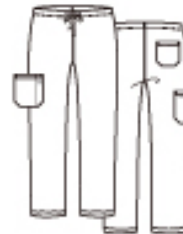
3500
UNISEX BASIC V-NECK TOP
Reg: XS - XL (M): 28.75"
Plus: 2XL - 5XL (M): 28.75"



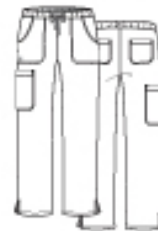
3501
DOUBLE V-NECK TOP
Reg: XXS - XL (M): 27.25"
Plus: 2XL - 3XL (M): 27.25"
Short: XS - XL (M): 25.25"



5502
MEN'S 3-POCKET V-NECK TOP
Reg: XS - XL (M): 29.75"
Plus: 2XL - 3XL (M): 29.75"



6500
UNISEX BASIC PANT
Reg: XS - XL (Inseam): 31"
Plus: 2XL - 5XL (Inseam): 31"
Short: XS - 2XL (Inseam): 28.5"



6501
FULL ELASTIC WAISTBAND
CARGO PANT
Reg: XXS - XL (Inseam): 31"
Plus: 2XL - 3XL (Inseam): 31"
Petite: XS - 2XL (Inseam): 28.5"
Tall: SM - XL (Inseam): 33.5"



8502
MEN'S HALF ELASTIC
WAISTBAND CARGO PANT
Reg: XS - XL (Inseam): 31"
Plus: 2XL - 3XL (Inseam): 31"
Short: XS - 2XL (Inseam): 28.5"

EON

59% Polyester / 22% Rayon / 19% Elastereil-P Mesh: 83% Polyester 17% Spandex | High Performance



1708
V-NECK POCKET TOP
Reg: XXS - XL (M): 27.75"
Plus: 2XL - 3XL (M): 27.75"



5308
MEN'S MESH PANEL
3-POCKET V-NECK TOP
Reg: XXS - XL (M): 30.75"
Plus: 2XL - 3XL (M): 30.75"



8708
SPORTY MESH PANEL JACKET
Reg: XXS - XL (M): 27"
Plus: 2XL - 3XL (M): 27"



7308
FULL ELASTIC ZIPPER
POCKET CARGO PANT
Reg: XXS - XL (Inseam): 30.5"
Plus: 2XL - 3XL (Inseam): 30.5"
Petite: XXS - 3XL (Inseam): 28"
Tall: XS - 3XL (Inseam): 33"



8308
MEN'S HALF ELASTIC
8-POCKET CARGO PANT
Reg: XXS - XL (Inseam): 31"
Plus: 2XL - 3XL (Inseam): 31"
Petite: XXS - 3XL (Inseam): 28.5"
Tall: XS - 3XL (Inseam): 33.5"

55% Cotton / 42% Polyester / 3% Spandex | High Comfort Stretch

BLOSSOM



1102
MOCK-WRAP TOP

Reg: XS - XL (M): 27.5"
Plus: 2XL - 3XL (M): 27.5"



1202
3-POCKET V-NECK TOP

Reg: XS - XL (M): 27.5"
Plus: 2XL - 3XL (M): 27.5"



9102
MULTI-POCKET FLARE PANT

Reg: XS - XL (Inseam): 31"
Plus: 2XL (Inseam): 31"
Petite: XS - 2XL (Inseam): 28"



9202
UTILITY CARGO PANT

Reg: XS - XL (Inseam): 30.5"
Plus: 2XL - 5XL (Inseam): 30.5"
Petite: XS - 3XL (Inseam): 28"
Tall: XS - 3XL (Inseam): 33.5"

65% Polyester / 35% Cotton | High Durability

CORE



1006
UNISEX V-NECK TOP

Reg: XXS - XL (M): 27.75"
Plus: 2XL - 5XL (M): 27.75"



1016
CLASSIC V-NECK TOP

Reg: XXS - XL (M): 27.75"
Plus: 2XL - 5XL (M): 27.75"



1026
CONTRAST MOCK-WRAP TOP

Reg: XXS - XL (M): 26.25"
Plus: 2XL - 5XL (M): 26.25"



9006
UNISEX SEAMLESS PANT

Reg: XXS - XL (Inseam): 31"
Plus: 2XL - 5XL (Inseam): 31"
Petite: XS - 3XL (Inseam): 28"
Petite Plus: XSP - 3XLP (Inseam): 28"
Tall: XS - 3XL (Inseam): 33"
Petite Tall: XST - 3XLT (Inseam): 33"



9016
FULL ELASTIC WAISTBAND
CARGO PANT

Reg: XXS - XL (Inseam): 31"
Plus: 2XL - 5XL (Inseam): 31"
Petite: XS - 3XL (Inseam): 28"
Tall: XS - 3XL (Inseam): 33"



9026
CLASSIC FLARE PANT

Reg: XXS - XL (Inseam): 31"
Plus: 2XL - 5XL (Inseam): 31"
Petite: XS - 3XL (Inseam): 28"
Tall: XS - 3XL (Inseam): 33"



9626
UTILITY CARGO PANT

Reg: XXS - XL (Inseam): 31"
Plus: 2XL - 5XL (Inseam): 31"
Petite: XS - 3XL (Inseam): 28"
Tall: XS - 3XL (Inseam): 33"

RED PANDA

65% Polyester / 35% Cotton | High Durability



1706
UNISEX V-NECK TOP

Reg: XXS - XL (M): 27.75"
Plus: 2XL - 5XL (M): 27.75"



1716
V-NECK TWO POCKET TOP

Reg: XXS - XL (M): 27.75"
Plus: 2XL - 5XL (M): 27.75"



1726
WOMEN'S CURVED
MOCK-WRAP TOP

Reg: XXS - XL (M): 27.75"
Plus: 2XL - 5XL (M): 27.75"



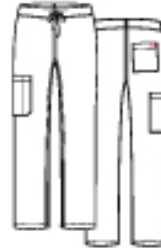
5206
MEN'S 3-POCKET V-NECK TOP

Reg: XS - XL (M): 30.75"
Plus: 2XL - 5XL (M): 30.75"



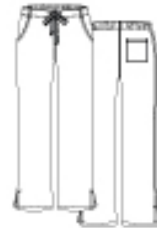
8716
UNISEX SNAP JACKET

Reg: XXS - XL (M): 29.25"
Plus: 2XL - 5XL (M): 29.25"



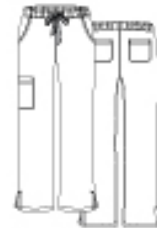
9706
UNISEX BASIC PANT

Reg: XXS - XL (Inseam): 30.75"
Plus: 2XL - 5XL (Inseam): 30.75"
Petite: XXS - 2XL (Inseam): 28.25"
Tall: XS - XL (Inseam): 33.25"



9716
HALF ELASTIC PANT

Reg: XXS - XL (Inseam): 30.5"
Plus: 2XL - 5XL (Inseam): 30.5"
Petite: XS - 3XL (Inseam): 28"
Tall: XS - 3XL (Inseam): 33"



9726
WOMEN'S FULL ELASTIC
CARGO PANT

Reg: XXS - XL (Inseam): 30.5"
Plus: 2XL - 5XL (Inseam): 30.5"
Petite: XXS - 3XL (Inseam): 28"
Tall: XS - 3XL (Inseam): 33"



8206
MEN'S FULL ELASTIC
10-POCKET CARGO PANT

Reg: XS - XL (Inseam): 31"
Plus: 2XL - 5XL (Inseam): 31"
Short: XS - 4XL (Inseam): 28.5"
Tall: XS - 3XL (Inseam): 33.5"







8706
WOMEN'S WARM-UP JACKET

Reg: XS - XL (M): 28.5"
Plus: 2XL - 5XL (M): 28.5"

AGR Apple Green	HTR Hunter Green	QGR Quiet Grey
ALM Acid Lime	IBL Imperial Blue	RBR Raspberry Rose
APL Apple	IDG Indigo Blue	RED Red
AQU Aquamarine	IFB Infinite Blue	RNV Real Navy
ARB Aruba Blue	KHI Khaki	RPK Rose Pink
AZL Azure	LBL Lake Blue	RPW Real Pewter
BKM Black with Black	LCO Living Coral	RSB Raspberry
BLK Black	LGN Lush Green	RTL Real Teal
BLP Blush Pink	LGY Light Grey	RYL Royal Blue
BPK Blush Pink	LIM Lime	SBP Strawberry Pink
CBL Ceil Blue	LVR Lavender	SCB Scuba Blue
CHC Chocolate	MBL Malibu Blue (Core)	SGN Sea Green
CHR Charcoal	MBLE Maui Blue (EON)	SLV Silver
CJB Cherries Jubilee	MNT Mint	SKY Sky Blue
CPK Candy Pink	MSV Metallic Silver	SUN Sunshine
CRB Caribbean Blue	NAVY Navy	TBL Teal Blue
CRM Crimson	NAVY Navy with Navy	TEL Teal
CRD Cherry Red	OLV Olive	THR True Hunter
CYB Cyan Blue	ORD Orchid	TNY True Navy
DHA Dahlia	ORB Orchid Bouquet	TPL True Purple
DCR Deep Coral	PCB Pacific Blue	TRQ Turquoise
EGP Eggplant	PEW Pewter	UVI Ultra Violet
FSM Fresh Salmon	PLM Plum	White White
GBL Galaxy Blue	PNV Pure Navy	WIN Wine
GRP Grape	PPC Pink Peacock	WMN Watermelon
HGR Heather Grey	PPK Passion Pink	YLW Yellow
HNV Heather Navy	PPL Purple	
HPK Hot Pink		

PRINT CAPS

	ANM Animalia
	BIB Birds in Bloom
	FVF Forever Friends
	GMW Gnome Matter What
	TPP Tropical Paradise

COLOR GUIDE

MOMENTUM

100% Polyester Mechanical Stretch | High Comfort Stretch

5001

Reg: XXS - XL
Plus: 2XL - 5XL

CBL	RYL	GBL	NVY
RED	HPK	QGR	GRP
CRB	HTR	OLV	
WIN	PEW	BLK	



5091

Reg: XXS - XL
Plus: 2XL - 5XL
Petite: XS - 3XL
Tall: XS - 2XL

CBL	RYL	GBL	NVY
RED	HPK	QGR	GRP
CRB	HTR	OLV	
WIN	PEW	BLK	



5002

Reg: XXS - 5XL
Plus: 2XL - 3XL

CBL	GBL	NVY	CRB
HTR	OLV	PEW	BLK
RED	HPK	QGR	GRP
WIN	RYL		



5092

Reg: XXS - 3XL
Petite: XS - 3XL
Tall: XS - 2XL

CBL	RYL	GBL	NVY
RED	HPK	QGR	GRP
CRB	HTR	OLV	
WIN	PEW	BLK	



5801

Reg: XS - 5XL
Plus: XS - 3XL

CBL	GBL	NVY	CRB
HTR	OLV	PEW	BLK
RED	QGR	GRP	RYL
WIN			



5891

Reg: XS - 5XL
Plus: XS - 3XL
Short: XS - 3XL
Tall: SM - 2XL

CBL	RYL	GBL	NVY
RED	QGR	GRP	WIN
CRB	HTR	OLV	PEW
BLK			



5802

Reg: XS - 5XL
Plus: XS - 3XL

CBL	GBL	NVY	CRB
OLV	PEW	BLK	RYL
HTR	RED	QGR	GRP
WIN			



5892

Reg: XS - 3XL
Plus: 2XL - 3XL
Short: XS - 3XL
Tall: SM - 2XL

CBL	RYL	GBL	NVY
RED	QGR	PEW	BLK
CRB	HTR	OLV	
GRP	WIN		



5061

Reg: XS - XL
Plus: 2XL - 5XL

CBL	RYL	GBL	NVY
CRB	HTR	OLV	WIN
PEW	BLK		



5861

Reg: XS - XL
Plus: 2XL - 5XL

CBL	RYL	GBL	NVY
CRB	HTR	OLV	WIN
PEW	BLK		



MATRIX PRO

74% Polyester / 20% Rayon / 6% Spandex
High Performance

NEW STYLE

3902

Reg: XXS - XL
Plus: 2XL - 3XL

RYL	NVY	OLV	WIN
PEW	BLK	HGR	HNV



NEW STYLE

5902

Reg: XS - XL
Plus: 2XL - 3XL

RYL	NVY	OLV	WIN
PEW	BLK	HGR	HNV



5901

Reg: XS - XL
Plus: 2XL - 3XL

RYL	NVY	OLV	WIN
PEW	BLK	HGR	HNV



3901

Reg: XXS - XL
Plus: 2XL - 3XL

HGR	HNV
-----	-----



NEW STYLE

6902

Reg: XXS - XL
Plus: 2XL - 3XL
Petite: XS - 2XL
Tall: XS - 2XL

RYL	NVY	OLV	WIN
PEW	BLK	HGR	HNV



NEW STYLE

8902

Reg: XS - XL
Plus: 2XL - 3XL
Petite: XS - 2XL
Tall: XS - 2XL

RYL	NVY	OLV	WIN
PEW	BLK	HGR	HNV



8901

Reg: XS - XL
Plus: 2XL - 3XL
Short: XS - 2XL

RYL	NVY	OLV	WIN
PEW	BLK	HGR	HNV



6901

Reg: XXS - XL
Plus: 2XL - 3XL
Petite: XS - 2XL
Tall: SM - XL

HGR	HNV
-----	-----



7091

Reg: XS - XL
Plus: 2XL - 3XL

HGR	HNV
-----	-----



92% Polyester / 8% Spandex | High Comfort Stretch

MATRIX IMPULSE

4510

Reg: XXS - XL
Plus: 2XL - 5XL



CBL-NVY	RYL-BLK	NVY-NVY
WIN-PEW	PEW-BLK	BLK-BLK
HPK-BLK	WMN-NVY	SUN-PEW
QGR-NVY		

4511

Reg: XXS - XL
Plus: 2XL - 3XL



CBL	RYL	GBL	CRB
OLV	WIN	HPK	PEW
CJB	QGR	TEL	HTR
EGP	XHI		

8510

Reg: XXS - 5XL
Plus: 2XL - 3XL
Petite: XXS - 2XL



CBL-NVY	RYL-BLK	NVY-NVY
WMN-NVY	HPK-BLK	WIN-PEW
PEW-BLK	BLK-BLK	CJB-BLK
QGR-NVY	SUN-PEW	QGR-NVY
EGP	TEL	

4520

Reg: XXS - 5XL
Plus: 2XL - 3XL



CBL-NVY	RYL-BLK	NVY-NVY
WMN-NVY	HPK-BLK	WIN-PEW
PEW-BLK	BLK-BLK	CJB-BLK
QGR-NVY	SUN-PEW	QGR-NVY

4521

Reg: XXS - XL
Plus: 2XL - 3XL



CBL	RYL	GBL	CRB
OLV	WIN	HPK	PEW
CJB	QGR	TEL	HTR
EGP			

8520

Reg: XXS - XL
Plus: 2XL - 3XL
Petite: XXS - 3XL



CBL-NVY	RYL-BLK	GBL-GBL	WMN-NVY
HPK-BLK	PEW-BLK	BLK-BLK	RH
NVY-NVY	CRB-CRB	OLV-OLV	QGR-NVY
WIN-PEW	CJB-BLK	QGR-NVY	SUN-PEW
HTR	TEL	EGP	

4530

Reg: XXS - XL
Plus: 2XL - 3XL



CBL	RYL	NVY
WIN	PEW	BLK

7510

Reg: XS - XL
Plus: 2XL - 3XL



CBL	RYL	NVY
WIN	PEW	BLK

▲ - CONTRAST COLOR

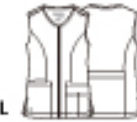
65% Polyester / 32% Rayon / 3% Spandex | High Comfort Stretch

MATRIX

NEW STYLE

7711

Reg: XS - XL
Plus: 2XL - 3XL



CBL	RYL	NVY	WIN
PEW	BLK	WHT	

3501

Reg: XXS - XL
Plus: 2XL - 3XL
Short: XS - XL



CBL	RYL	GBL	NVY
RED	HPK	PEW	BLK
TEL	CRB	OLV	EGP
WHT	WMN	SUN	ORB
WIN			

3502

Reg: XXS - XL
Plus: 2XL - 3XL



CBL	RYL	GBL	NVY
RED	HPK	PEW	BLK
TEL	CRB	OLV	EGP
WIN	WMN	DHA	
SUN	ORB		

▲ - CONTRAST COLOR - HEATHER GREY

6501

Reg: XXS - XL
Plus: 2XL - 3XL
Petite: XS - 2XL
Tall: SM - XL



CBL	RYL	GBL	NVY
HPK	PEW	BLK	WMN
TEL	CRB	OLV	WIN
EGP	DHA	FSM	RED
SUN	ORB	ARB	

3701

Reg: XXS - XL
Plus: 2XL - 3XL



CBL	RYL	GBL	NVY
RED	HPK	PEW	BLK
TEL	CRB	OLV	EGP
WMN	HTR	ARB	DHA
WIN	SUN	ORB	

6701

Reg: XXS - XL
Plus: 2XL - 3XL
Petite: XS - 2XL
Tall: XS - XL



CBL	RYL	GBL	NVY
RED	HPK	PEW	BLK
TEL	CRB	OLV	EGP
WHT	WMN	SUN	ORB
WIN	HTR	ARB	

7701

Reg: XS - XL
Plus: 2XL - 3XL



CBL	RYL	NVY	TEL
WIN	PEW	BLK	

5501

Reg: XS - XL
Plus: 2XL - 3XL



CBL	RYL	NVY	TEL
WIN	PEW	BLK	CRB
OLV	HTR		

COLOR GUIDE

MATRIX

65% Polyester / 32% Rayon / 3% Spandex | High Comfort Stretch

8501

Reg: XS - XL
Plus: 2XL - 3XL
Short: XS - 2XL

CBL	RYL	NVY	TEL
WIN	PEW	BLK	CRB
OLV	HTR		



5502

Reg: XS - XL
Plus: 2XL - 3XL

CBL	RYL	NVY	HTR
TEL	WIN	PEW	BLK
CRB	OLV		



8502

Reg: XS - 3XL
Plus: 2XL - 3XL
Short: XS - 2XL

CBL	RYL	NVY	HTR
TEL	WIN	PEW	BLK
CRB	OLV		



3500

Reg: XS - XL
Petite: 2XL - 5XL

CBL	RYL	NVY	WIN
PEW	BLK		



6500

Reg: XS - XL
Plus: 2XL - 5XL
Short: XS - 2XL

CBL	RYL	NVY	WIN
PEW	BLK		



EON SPORT

59% Polyester / 22% Rayon / 19% Elastereil-P | High Performance

1768

Reg: XS - 1XL
Plus: 2XL - 3XL

RYL	NVY	IFB
OLV	CHR	BLK



7368

Reg: XS - 1XL
Plus: 2XL - 3XL
Petite: XS - 2XL

RYL	NVY	IFB
OLV	CHR	BLK



1778

Reg: XS - 1XL
Plus: 2XL - 3XL

RYL	NVY	IFB
OLV	CHR	BLK



7378

Reg: XS - 1XL
Plus: 2XL - 3XL
Petite: XS - 2XL

RYL	NVY	IFB
OLV	CHR	BLK



EON

59% Polyester / 22% Rayon / 19% Elastereil-P Mesh: 83% Polyester 17% Spandex | High Performance

1708

Reg: XXS - XL
Plus: 2XL - 3XL

CBL	RYL	GBL	TNY
LVR	GRP	EGP	WIN
MBLE	TBL	CRB	SKY
RED	SBP	KHI	PEW
HTR	BLK	CHR	WHT



7308

Reg: XS - XL
Plus: 2XL - 3XL
Petite: XS - 2XL

CBL	RYL	GBL	TNY
LVR	GRP	EGP	WIN
MBLE	TBL	CRB	SKY
RED	SBP	KHI	PEW
HTR	BLK	CHR	WHT



1718

Reg: XXS - XL
Plus: 2XL - 3XL

CBL	RYL	GBL	TNY
EGP	WIN	PEW	BLK
LVR			



7318

Reg: XXS - XL
Plus: 2XL - 3XL
Petite: XXS - 3XL
Tall: XS - 3XL

CBL	RYL	GBL	TNY
EGP	WIN	PEW	BLK
LVR			



1738

Reg: XXS - XL
Plus: 2XL - 3XL

CBL	RYL	GBL	TNY
SBP	PEW	BLK	WHT
TBL	SKY	HTR	LVR
WIN	CRD	EGP	



7338

Reg: XXS - XL
Plus: 2XL - 3XL
Petite: XXS - 3XL
Tall: XS - 3XL

CBL	RYL	GBL	TNY
SBP	PEW	BLK	WHT
TBL	SKY	HTR	LVR
WIN	CRD	EGP	



1748

Reg: XXS - XL
Plus: 2XL - 3XL

CBL	RYL	GBL	TNY
SBP	PEW	BLK	WHT
TBL	SKY	HTR	LVR
WIN	CRD	EGP	



7348

Reg: XXS - XL
Plus: 2XL - 3XL
Petite: XXS - 3XL
Tall: XS - 3XL

CBL	RYL	GBL	TNY
SBP	PEW	BLK	WHT
TBL	SKY	HTR	LVR
WIN	EGP		



COLOR GUIDE

59% Polyester / 22% Rayon / 19% Elastereil-P Mesh: 83% Polyester 17% Spandex | High Performance

EON

8708

Reg: XXS - XL
Plus: 2XL - 3XL



CBL	TNY	WIN	PEW
BLK	WHT		

8728

Reg: XXS - XL
Plus: 2XL - 3XL



CBL	TNY	BLK	WHT
-----	-----	-----	-----

5208

Reg: XXS - XL
Plus: 2XL - 3XL



CBL	RYL	TNY	PEW
BLK			

5308

Reg: XXS - XL
Plus: 2XL - 3XL



CBL	RYL	TNY	CRB
WIN	KHI	PEW	CHR
HTR	BLK		

8308

Reg: XXS - XL
Plus: 2XL - 3XL
Petite: XXS - 3XL
Tall: XS - 3XL



CBL	RYL	TNY	CRB
WIN	KHI	PEW	CHR
HTR	BLK		

96% Polyester / 4% Spandex | High Performance

PURE SOFT

1901

Reg: XXS - XL
Plus: 2XL - 3XL



CBL	RYL	NAVY	TRQ
WHT	WIN	RBR	PEW
CRB	BLK		

7901

Reg: XXS - XL
Plus: 2XL - 3XL
Petite: XS - 3XL
Tall: XS - 2XL



CBL	RYL	NAVY	TRQ
CRB	WHT	WIN	RBR
PEW	BLK		

1902

Reg: XXS - XL
Plus: 2XL - 3XL



CBL	RYL	NAVY	WIN
RBR	PEW	BLK	WHT

7902

Reg: XXS - XL
Plus: 2XL - 3XL
Petite: XS - 3XL
Tall: XS - 2XL



CBL	RYL	NAVY	WIN
RBR	PEW	BLK	WHT

55% Cotton / 42% Polyester / 3% Spandex | High Comfort Stretch

BLOSSOM

1102

Reg: XS - XL
Plus: 2XL - 3XL



CBL-NAVY	PCB-YLW	RYL-YLW
NAVY-CBL	HTR-LGN	CRB-TBL
CHR-CRM	PEW-BLK	PKC-PCB
BLK-PCB	WHT-WHT	KHI-CHR
CRM-LPK	WIN-SLV	

9202

Reg: XS - XL
Plus: 2XL - 5XL
Petite: XS - 3XL
Tall: XS - 3XL



CBL-NAVY	PCB-YLW	RYL-YLW
NAVY-CBL	HTR-LGN	CRB-TBL
CHR-CRM	PEW-BLK	PKC-PCB
BLK-PCB	WHT-WHT	KHI-CHR
CRM-LPK	WIN-SLV	

1202

Reg: XS - XL
Plus: 2XL - 3XL



CBL-NAVY	RYL-YLW	NAVY-CBL
HTR-LGN	PKC-PCB	PEW-BLK
BLK-PCB	WHT-WHT	CHR-CRM
WIN-SLV	CRM-LPK	

9102

Reg: XXS - XL
Plus: 2XL - 3XL
Petite: XS - 2XL



CBL-NAVY	RYL-YLW	NAVY-CBL
HTR-LGN	PKC-PCB	CHR-CRM
BLK-PCB	WHT-WHT	CRM-LPK
WIN-SLV		

▲ = CONTRAST COLOR

COLOR GUIDE

RED PANDA

65% Polyester / 35% Cotton | High Comfort Stretch

1716

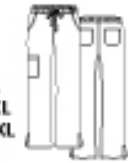
Reg: XXS - XL
Plus: 2XL - 5XL



CBL	RYL	GBL	TNY
HTR	EGP	WIN	RED
TRQ	TEL	CRB	SGN
CPK	KHI	PEW	BLK
OLV	WHT		

9726

Reg: XXS - XL
Plus: 2XL - 5XL
Petite: XS - 3XL
Tall: XS - 3XL



CBL	RYL	GBL	TNY
HTR	EGP	WIN	RED
TRQ	TEL	CRB	SGN
CPK	SPK	KHI	PEW
OLV	BLK	WHT	

9716

Reg: XXS - XL
Plus: 2XL - 5XL
Petite: XS - 3XL
Tall: XS - 3XL



CBL	RYL	GBL	TNY
HTR	EGP	WIN	RED
TRQ	TEL	CRB	SGN
CPK	KHI	PEW	BLK
OLV	WHT		

5206

Reg: XS - XL
Plus: 2XL - 5XL



CBL	RYL	TNY	HTR
WIN	KHI	PEW	BLK

8716

Reg: XXS - XL
Plus: 2XL - 5XL



TEL	RYL	TNY	PEW
BLK			

8706

Reg: XS - XL
Plus: 2XL - 5XL



CBL	RYL	TNY	HTR
WIN	RED	PEW	BLK
WHT			

8206

Reg: XXS - XL
Plus: 2XL - 5XL
Short: XS - 4XL
Tall: XS - 3XL



CBL	RYL	TNY	HTR
WIN	KHI	PEW	BLK

9706

Reg: XXS - XL
Plus: 2XL - 5XL
Petite: XXS - 2XL
Tall: XS - XL



CBL	RYL	GBL	TNY
HTR	EGP	WIN	RED
TRQ	TEL	CRB	SGN
CPK	KHI	PEW	BLK
OLV	WHT		

1726

Reg: XXS - XL
Plus: 2XL - 5XL



CBL	RYL	GBL	TNY
HTR	EGP	WIN	RED
TRQ	TEL	CRB	SGN
CPK	SPK	KHI	PEW
OLV	BLK	WHT	

1706

Reg: XXS - XL
Plus: 2XL - 5XL



CBL	RYL	GBL	TNY
HTR	EGP	WIN	RED
TRQ	TEL	CRB	SGN
CPK	KHI	PEW	BLK
OLV	WHT		

CORE

65% Polyester / 35% Cotton | High Durability

1006

Reg: XXS - XL
Plus: 2XL - 5XL



CBL	RYL	NAVY	TEL	CRB
KHI	PEW	BLK	WHT	MBL
HTR	WIN	RED	HPK	LBL
PPL	CHC			

9006

Reg: XXS - XL
Plus: 2XL - 5XL
Petite: XS - 3XL
Tall: XS - 3XL

Petite Plus:
XSP - 3XLP
Petite Tall:
XST - 3XLT



CBL	RYL	NAVY	TEL	CRB	PPL
KHI	PEW	BLK	WHT	MSL	CHC
HTR	WIN	RED	HPK	LBL	

1016

Reg: XXS - XL
Plus: 2XL - 5XL



CBL	RYL	MBL	NAVY	KHI
WIN	RED	HPK	CHC	PEW
LBL	TEL	CRB	HTR	PPL
BLK	WHT			

9016

Reg: XXS - XL
Plus: 2XL - 5XL
Petite: XS - 3XL
Tall: XS - 3XL



CBL	RYL	MBL	NAVY	KHI
WIN	RED	HPK	CHC	PEW
LBL	TEL	CRB	HTR	PPL
BLK	WHT			

1026

Reg: XXS - XL
Plus: 2XL - 5XL



CBL-NAVY	RYL-BLK	MBL-HPK	NAVY-CBL
WIN-BLK	RED-PEW	HPK-PEW	CHC-HPK
TEL-HPK	HTR-BLK	PPL-CBL	WHT-WHT
KHI-WIN	PEW-BLK	BLK-PEW	

9026

Reg: XXS - XL
Plus: 2XL - 5XL
Petite: XS - 3XL
Tall: XS - 3XL



CBL	RYL	MBL	NAVY	KHI
WIN	RED	HPK	CHC	PEW
LBL	TEL	CRB	HTR	PPL
BLK	WHT			

9626

Reg: XXS - XL
Plus: 2XL - 5XL
Petite: XS - 3XL
Tall: XS - 3XL



CBL	RYL	MBL	NAVY
WIN	RED	HPK	CHC
LBL	TEL	CRB	HTR
KHI	PEW	PPL	BLK
WHT			

CONTRAST COLOR

90% Polyester / 10% Lycra
High Comfort Stretch

BESTEE

6909

Reg: XXS - XL
Plus: 2XL - 3XL



CBL	RYL	NAVY	WIN	PEW	BLK
WHT	CRB	HGR	MSV	RED	

FASHION COLORS

ALM	AQU	RTL	LCO	PPC	UVI
-----	-----	-----	-----	-----	-----

High Comfort Stretch

KNITS

6709

Reg: XS - XL
Plus: 2XL - 3XL



CBL	RYL	NAVY	TBL
PEW	BLK	WHT	WIN
APL	SKY	HPK	BLP

60% Rayon / 35% Polyester
5% Spandex

6809

Reg: XS - XL
Plus: 2XL - 3XL



SKY	BLP	WHT
-----	-----	-----

80% Nylon / 20% Spandex

100% Polyester Bonded Fleece | High Comfort Stretch

BLAZE

3812

Reg: XS - XL
Plus: 2XL - 3XL



RYL	NAVY	PEW	BLK
-----	------	-----	-----

3814

Reg: SM - XL
Plus: 2XL - 3XL



BLK

92% Polyester / 8% Spandex | High Comfort Stretch

PRINTS

Spring 2022

XS - 3XL

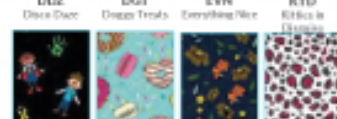
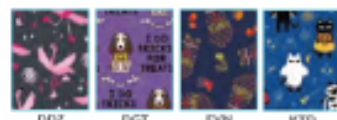


XS - 5XL

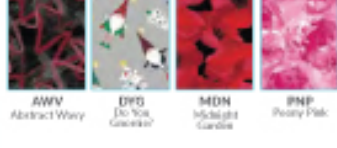


Fall/Winter 2021

XS - 3XL



XS - 5XL



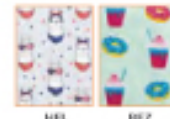
1767

Reg: XS - XL
Plus: 2XL - 3XL
Plus: 4XL - 5XL
(Select Styles)

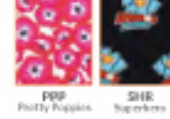


Summer 2021

XS - 3XL

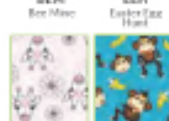
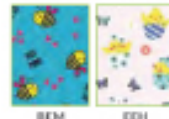


XS - 5XL



Spring 2021

XS - 3XL



XS - 5XL



COLOR GUIDE

LAB COATS



NEW STYLE MOMENTUM 100% Polyester Mechanical Stretch

5071

Reg: XXS - XL
Plus: 2XL - 3XL



WHT

5973

Reg: XXS - XL
Plus: 2XL - 5XL



WHT

5072

Reg: XXS - XL
Plus: 2XL - 5XL



WHT

5871

Reg: XXS - XL
Plus: 2XL - 5XL



WHT

5073

Reg: XXS - XL
Plus: 2XL - 5XL



WHT

5872

Reg: XXS - XL
Plus: 2XL - 5XL



WHT

RED PANDA 65% Polyester 35% Cotton

7116

Reg: XS - XL
Plus: 2XL - 3XL



WHT

7216

Reg: XS - XL
Plus: 2XL - 5XL



WHT

7126

Reg: XS - XL
Plus: 2XL - 3XL



WHT

7256

Reg: XS - XL
Plus: 2XL - 5XL



WHT

7156

Reg: XS - XL
Plus: 2XL - 3XL



WHT

SMART 96% Polyester 4% Spandex

8801

Reg: XXS - XL
Plus: 2XL - 4XL



PEW BLK WHT

8803

Reg: XXS - XL
Plus: 2XL - 3XL



NAVY PEW BLK WHT

8802

Reg: XXS - XL
Plus: 2XL - 4XL



BLK-WHT BLK-PEW WHT-WHT WHT-BLK

▶ CONTRAST COLOR

CORE 65% Polyester 35% Cotton

7151

Reg: XXS - XL
Plus: 2XL - 3XL



WHT

7551

Reg: XS - XL
Plus: 2XL - 5XL



WHT

ACCESSORIES

READY GO

NB003/NB003S

Dimension: 16" [H] x 12" [W] x 7.5" [D]
 Front Pocket Height: 10"
 Side Pocket Height: 7"
 Exterior Pocket: 9"[H] x 11.5"[W]



NB005/NB006

Dimension: 13" [H] x 10.5" [W] x 5.5" [D]
 Front Pocket Height: 8"
 Side Pocket Height: 7"
 Exterior Pocket: 8"[H] x 10" [W]



NB007

Dimension: 14" [H] x 10" [W] x 7" [D]
 Front Pocket Height: 6.8"
 Side Pocket Height: 6.5"
 Exterior Pocket: 7.5"[H] x 10"[W]



NB011

Dimension: 6.75" [H] x 9.5" [W] x 2.5" [D]
 Handle Drop: 1.5"
 Strap Drop: Long: 22.5" | Short: 12.5"



NB012

Dimension: 16" [H] x 14" [W] x 7.25" [D]
 Front Pocket Height: 7.25"
 Side Pocket Height: 8"
 Tech Pocket Height: 15.75"



NB015 NEW STYLE

Dimension: 12" [H] x 14.5" [W] x 7" [D]
 Front Pocket Height: 8.5"
 Side Pocket Height: 7"
 Interior Tech Pocket: 8" [H] x 13.5" [W]



SCRUB CAP

NC010

One size fits all



PRIMAFLEX FABRIC 60% Cotton 37% Rayon 3% Spandex



NC015

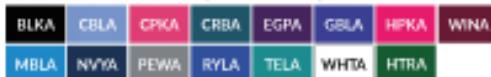
One size fits all



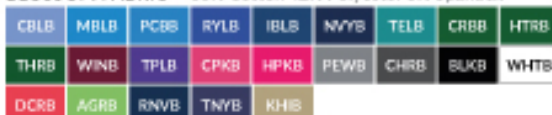
ECOFLEX FABRIC 60% Cotton 37% Rayon 3% Spandex



EON FABRIC 59% Polyester 22% Rayon 19% Elastereil-P



BLOSSOM FABRIC 55% Cotton 42% Polyester 3% Spandex



PRIMAFLEX FABRIC 52% Cotton 35% Polyester 13% Elastereil-P (Lycra)



RED PANDA FABRIC 65% Polyester 35% Cotton



NC020

One size fits all



ECOFLEX FABRIC 60% Cotton 37% Rayon 3% Spandex



BLOSSOM FABRIC 55% Cotton 42% Polyester 3% Spandex



PRIMAFLEX FABRIC 52% Cotton 35% Polyester 13% Elastereil-P (Lycra)



RED PANDA FABRIC 65% Polyester 35% Cotton



MASK

CM010

Sizes: SM, MD, LG



MASKADAPTOR

MA010

One size fits all.



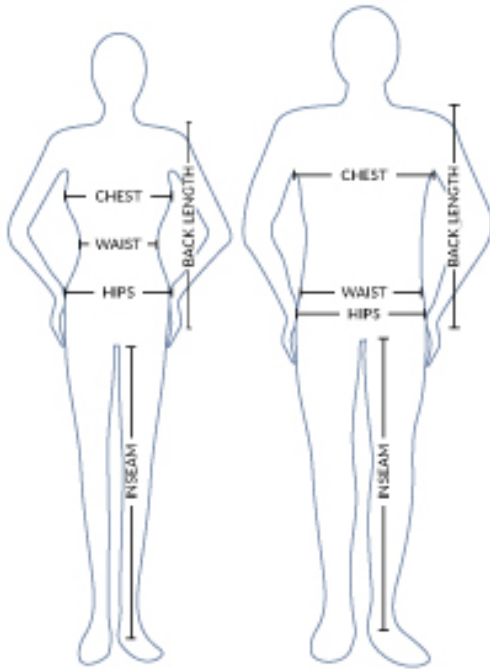
MASK EXTENDER

MA010

One size fits all.



SIZING GUIDE



CHEST

With arms relaxed at your sides, measure the fullest part of the chest.

WAIST

Measure under the natural waistline, loosely holding the tape measure.

HIPS

Standing with feet together, measure around the fullest part of the hips.

INSEAM

Select a pair of your best fitting pants of a similar material.

Measure along the inside of the leg, from just below the crotch to the bottom of the pant.

LENGTH

We recommend petite for women up to 5'2", regular length for up to 5'6", and tall length for 5'7" and above.

WOMEN'S FIT	XXS	XS	S	M	L	XL	1XL	2XL	3XL	4XL	5XL
READY-TO-WEAR	0	2-4	6-8	10-12	14-16	18-20	21	22-24	26-28	30-32	34-36
CHEST/BUST	30-31	32-33	34-35	36-38	39-42	43-46	46-47	47-50	51-54	55-58	59-62
WAIST	23-24	25-26	27-28	29-31	32-35	36-39	39-40	40-43	44-47	48-51	52-55
HIP	32-33	34-35	36-37	38-40	41-44	45-48	48-49	49-52	53-56	57-61	62-66

MEN'S FIT	XXS	XS	S	M	L	XL	2XL	3XL	4XL	5XL
CHEST	31-32	33-35	36-38	39-41	42-45	46-49	50-53	54-57	58-61	62-65
WAIST	22-24	25-27	28-30	31-33	34-37	38-41	42-45	46-49	50-53	54-57
HIP	31-32	33-35	36-38	39-41	42-45	46-49	50-53	54-57	58-61	62-65

UNISEX FIT	XXS	XS	S	M	L	XL	2XL	3XL	4XL	5XL
CHEST/BUST	29-31	32-34	35-37	38-40	41-44	45-48	49-52	53-56	57-60	61-64
WAIST	23-24	25-26	27-29	31-32	33-36	37-40	41-44	45-48	49-52	53-57
HIP	30-32	33-35	36-38	39-41	42-45	46-49	50-53	54-57	58-61	62-65

Existen **5 formas** de ordenar:



Llámanos **+52 56 2476 5680**



WhatsApp **+52 56 2476 5680**



Ordena en **www.maevn.mx**



Email **info@maevn.mx**

TÉRMINOS DE GENERALES DE GARANTÍAS Y DEVOLUCIONES

Los siguientes son los términos generales de la marca Maevn Uniforms. Se reserva el derecho de revisar estos términos y condiciones.

PROCESO DE DEVOLUCIONES

Respaldamos la calidad de tus productos siempre y cuando sea mercancía defectuosa o dañada de fábrica. Para conocer las políticas y términos de devoluciones comunícate con nuestro departamento de servicio al cliente para solicitar más información ó envíanos un correo electrónico.

SOLUCIÓN AL CLIENTE

Una vez que confirmamos que el producto tiene algún defecto de fabrica, con gusto la aceptaremos y se hará la reposición del producto o el reembolso del importe de tu compra

TÉRMINOS GENERALES DE ENVÍOS

Únicamente realizamos envíos internacionales a México y a los países de América Latina afiliados a nuestra tienda en línea. Con tiempos de entrega de 7 a 10 días hábiles.

ARTÍCULOS PERDIDOS, ROBADOS O EXTRAVIADOS

No nos hacemos responsables por paquetes perdidos o robados. Verifique con su oficina local de paquetería si cree que su paquete se perdió o fue robado. Recomendamos consultar su número de seguimiento constantemente.

SE INCLUYEN LOS GASTOS DE ENVÍO

A finalizar tu compra, dependiendo el país en el que te encuentres, se realiza un cargo por servicio de envío puerta a puerta. Si vives en Ciudad de México puedes solicitar la recolección de tus productos en nuestras oficinas sin costo.

TOP
4511 OLV
4510 HPK

BOTTOM
8510 OLV
8520 HPK

BAG
NB003 CAMO,
CHT, TRQ,
NST, OLV



 **maevn**

Luis Urbina 4 PHB Polanco, 11560 Miguel Hidalgo, CDMX

WhatsApp (55) 5624765680 | info@maevn.mx

www.maevn.mx